

GULF COAST ASSOCIATION OF GEOLOGICAL SOCIETIES

Transactions of the  
39th ANNUAL MEETING

CORPUS CHRISTI, TEXAS  
OCTOBER 25 - 27, 1989

G C A G S

*Corpus Christi*

'89



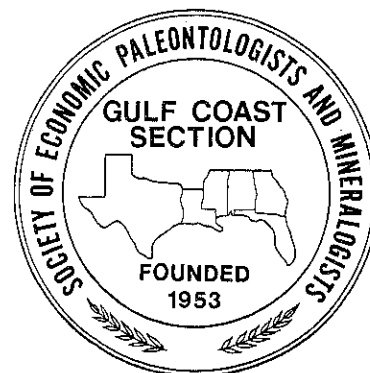
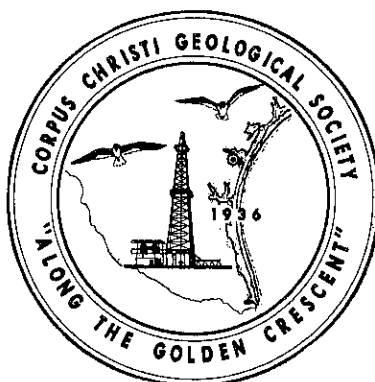
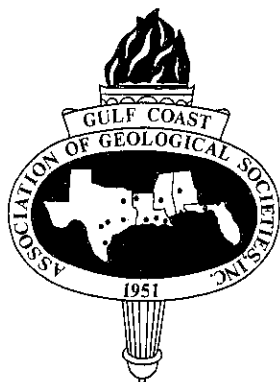
**ENERGY  
INTO THE '90s**

Amoco Production Company  
Library Info Center  
Houston

# TRANSACTIONS

## GULF COAST ASSOCIATION OF GEOLOGICAL SOCIETIES

A SECTION OF THE AMERICAN ASSOCIATION OF PETROLEUM GEOLOGISTS



VOLUME XXXIX, 1989

WAYNE S. CROFT  
(GCAGS)

and

JENNIFER SMITH  
PROUTY  
(GCS/SEPM)

EDITORS

Prepared for

The Thirty-ninth Annual Meeting of the  
GULF COAST ASSOCIATION OF GEOLOGICAL SOCIETIES  
AAPG REGIONAL MEETING

and

The Thirty-sixth Annual Meeting of the  
GULF COAST SECTION OF THE  
SOCIETY OF ECONOMIC PALEONTOLOGISTS AND  
MINERALOGISTS

October 25 - 27, 1989

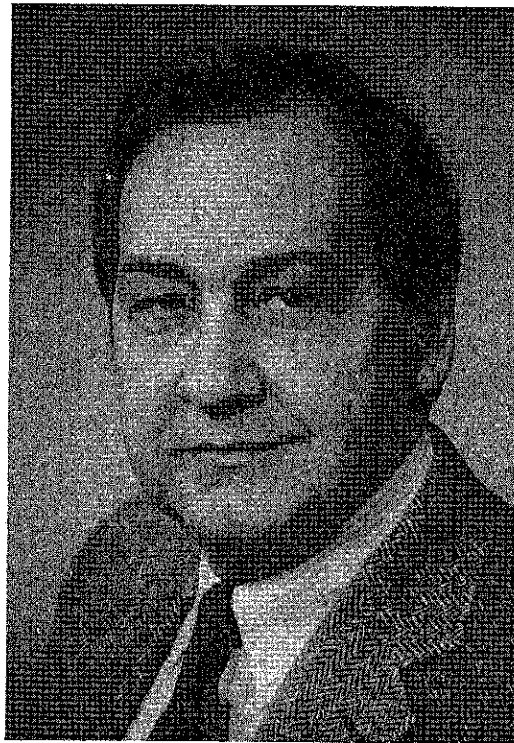
Published at Corpus Christi, Texas

*Copyright 1989 by the Gulf Coast Association of Geological Societies.  
No reproduction without permission of the President of GCAGS.*

# DEDICATION

## Transactions Volume 39

*William L. Fisher*



It is with distinct pleasure that the Convention Committee of the Corpus Christi Geological Society dedicates this volume of the *Transactions* of the Thirty-Ninth Annual Meeting to William L. Fisher in recognition of his many outstanding contributions to the geological profession through research, administration, teaching, professional affairs and distinguished public service.

Bill Fisher's career has been characterized by an amazing breadth of involvement, the impressive quality of his work, and a seemingly boundless level of energy and dedication to our profession. Respect and admiration for Bill's immeasurable contributions are not limited to those geologists living in Texas and the Gulf Coast, where he has lived and worked most of his professional life. These same feelings are

shared by other geologists as Bill's reputation is most certainly international in scope.

Born in 1932 in Marion, Illinois, Bill was educated in the public schools of that area before his graduation from Southern Illinois University in 1954 with a B.S. degree in geology. That same year he married Marilee Booth. This petite and charming lady has provided Bill with constant support and encouragement throughout his career. Bill earned both his M.A. (1958) and Ph.D. (1961) degrees in geology from the University of Kansas. In 1960, Bill began his professional life as a research geologist with The University of Texas Bureau of Economic Geology. How fortunate it has been for both Texas and the University that Bill chose to make Austin his home!

Bill's early years at the Bureau were spent in geological research that served him well as he developed concepts, many new and unique at the time but now universally accepted, which formed the basis for widely referenced classic publications on depositional systems, especially ancient delta complexes. His landmark paper written with J.H. McGowen titled "Depositional Systems in the Wilcox Group of Texas and Their Relationship to Occurrence of Oil and Gas" was first presented at the 1967 Annual Meeting of GCAGS. Bill's list of publications shows an astounding range and magnitude. He appears as author or co-author on 184 articles varying from learned discussions of Upper Paleozoic barnacles to his evaluations of the U.S. oil and gas resource base. Bill is in constant demand as a speaker and has given over 350 invited public lectures. In addition,

he has appeared innumerable times before Congressional and state legislative groups providing expert testimony critical to our profession and our country.

The Bureau of Economic Geology recognized Bill's scholarly attributes and dedication in 1970 by naming him Director and State Geologist of Texas, both positions still held by him today. Immediately, Bill's administrative abilities began to blossom. The Bureau greatly expanded the scope of its research and related activities and is a model state geological survey with major programs in energy, mineral, geological and environmental resources. The exceptionally high quality of the research conducted has remained constant under Bill's guidance and it operates today with an annual budget of over \$12 million.

Bill was recruited in 1976 to take a leave of absence from the Bureau to serve his country under Presidential appointment as Assistant Secretary for Energy and Minerals in the Department of the Interior with special responsibility for energy and mineral resource policy formulation. Bill's distinguished service in this two year assignment allowed him to become increasingly familiar with the Washington scene and to make many new friends and contacts. Both his knowledge and friendships have served him well when he has returned to Washington to testify on important oil and gas issues. His reputation for honesty and integrity are well known, and he has become a highly visible and respected spokesman for our profession.

Soon after Bill joined the Bureau he was asked to teach special courses in the Department of Geological Sciences. This dual relationship continued at the University of Texas and Bill's contributions as a faculty member did not go unnoticed. In 1984 Peter Flawn, then President of the University of Texas, asked Bill to assume the dual role of Director of the Bureau of Economic

Geology and Chairman of the Department of Geological Sciences. Bill agreed and also at the same time became Director of the Geology Foundation of The University of Texas which today has an endowment of over \$15 million. With strong leadership and excellent managerial skills he has effectively steered the Department through the extremely difficult times of the past several years caused by the oil and gas industry recession and the attendant decreasing employment opportunities for graduating students and funding problems for higher education. Bill currently holds the prestigious Leonidas T. Barrow Centennial Chair in Mineral Resources at the University of Texas.

For the past fifteen years Bill has been engaged in overseas geological consulting, principally with Petrobras in Brazil and Lagoven in Venezuela. These relationships have allowed him direct involvement in oil and gas exploration efforts which he feels is essential to a complete understanding of our industry. It is characteristic of Bill that he consciously chose overseas consulting to avoid any possible conflicts with the programs he directs at the Bureau.

Bill's involvement and contributions to the American Association of Petroleum Geologists are most impressive. He has chaired and served on many committees; has been a Distinguished Lecturer on two separate occasions; and has received Distinguished Service Awards from both AAPG and its Division of Professional Affairs, of which he is a member. Bill's service to AAPG culminated in his election as President for the years 1985-86 and his term of office coincided with the severe industry problems previously mentioned. Bill's administrative skills served the Association well during a most difficult period as AAPG began the arduous task of trimming costs and programs and yet maintaining AAPG's high standards. Bill Fisher had the prior experience to enable him to make these judgments, and AAPG greatly benefitted from his wisdom and guidance.

The honors and awards Bill had received from the many diverse professional organizations to which he belongs are far too numerous to list. However, several must be mentioned. He is a member of the White House Science Council, Governor's Energy Council, Gas Research Institute, National Petroleum Council, and was President of the Association of American State Geologists in 1981-82. Bill has been active in the National Academy of Sciences for a number of years and has chaired several important committees that bear significantly on the oil and gas industry. He currently is co-chairman of the National Academy's Board of Earth Sciences and Resources. He served in 1973-74 as President of the Austin Geological Society and was named an Honorary Member of the Gulf Coast Association of Geological Societies in 1986, the highest honor given by the GCAGS.

Bill served his country in 1954-56 in the U.S. Army in Korea and for six years thereafter in the U.S. Army Reserves.

One of Bill's greatest attributes is his sincere interest in others. He has an uncanny knack for remembering names and events and at any gathering of geologists, Bill will be surrounded by friends as he relates some story that will invariably include those present. Bill Fisher has a world of admirers and a host of friends. His personal and unique mixture of scholarly ability, good managerial judgment, dedication, prodigious energy and personal warmth have truly combined to make him a "man for all seasons"!

This *Transactions* of the Gulf Coast Association of Geological Societies is dedicated to William L. Fisher for his contributions to the geological profession as a creative researcher, stimulative lecturer, skilled administrator, and respected industry spokesman.

Don R. Boyd

# TABLE OF CONTENTS

Dedication		Distinguished Service Awards, GCS/SEPM . . . . .	xiv
<i>William L. Fisher</i> . . . . .	iii	Honorary Members, GCS/SEPM . . . . .	xxvii
Report of the President, GCAGS . . . . .	x	1988-1989 Officers, GCS/SEPM . . . . .	xxviii
Report of the President, GCS/SEPM . . . . .	xi	1988 Best Paper Awards, GCAGS . . . . .	xxix
Report of the General Chairman . . . . .	xii	1988 Best Poster Awards, GCAGS . . . . .	xxxi
Report of the Editor, GCAGS . . . . .	xiii	Best Paper Awards & A.I. Levorsen Memorial Awards, GCAGS . . . . .	xxxiv
Report of the Editor, GCS/SEPM . . . . .	xiii	1988 Best Paper Awards, GCS/SEPM . . . . .	xxxvi
Officers and Committees . . . . .	xiv	Best Paper Awards, GCS/SEPM . . . . .	xxxviii
1989 Convention Committees . . . . .	xv	1989 Executive Committee, GCAGS . . . . .	xl
Honorary Membership, GCAGS		1988-1989 Executive Council, GCS/SEPM . . . . .	xli
<i>James Allen Gilreath</i> . . . . .	xvi	Officers of Member Societies, GCAGS and GCS/SEPM . . . . .	xlii
Distinguished Service Awards, GCAGS . . . . .	xvii	Standing Committees, GCAGS . . . . .	xliii
Special Recognition Award		Past Officers and Convention Chairmen, GCAGS . . . . .	xliv
<i>Don F. Tobin</i> . . . . .	xix	Past Officers, GCS/SEPM . . . . .	xlv
Honorary Members, GCAGS . . . . .	xx	By-Laws, GCAGS . . . . .	xlvi
Honorary Membership GCS/SEPM		By-Laws, GCS/SEPM . . . . .	xlviii
<i>Emmett Ray Adams</i> . . . . .	xxi		
Honorary Membership GCS/SEPM			
<i>Jack O. Colle</i> . . . . .	xxii		
Honorary Membership GCS/SEPM			
<i>John B. Dunlap, Jr.</i> . . . . .	xxiii		

## Technical Papers GCAGS

<b>Time-Rock Correlation: The Essential Element in Depositional Models</b>		<b>Correlation, Interpretation, and Exploration Potential of Lower Wilcox Valley-Fill Sequences, Colorado and Lavaca Counties, Texas</b>	
<i>Wayne M. Ahr</i> . . . . .	1	<i>Paul E. Devine and David M. Wheeler</i> . . . . .	57
<b>Seismic Amplitude Anomalies and AVO Analyses at Mestena Grande Field, Jim Hogg County, Texas</b>		<b>The Downip Yegua Trend—An Overview</b>	
<i>Richard C. Burnett</i> . . . . .	11	<i>Thomas E. Ewing and W. Grant Ferguson</i> . . . . .	75
<b>Impact on Hydrocarbon Retention of Sedimentary Fracturing and Faulting Around Salt Sheets in the Gulf Coast</b>		<b>Hydrocarbon Occurrences in Igneous and Metamorphic Rocks: The Plays of the 1990's</b>	
<i>S. Cao, I. Lerche, and J. J. O'Brien</i> . . . . .	15	<i>Danny W. Harrelson</i> . . . . .	85
<b>Log Response as a Model for Production: Deep Wilcox Sandstones, Provident City Field, Lavaca County, Texas</b>		<b>Recent Advancements in Reservoir Description Techniques</b>	
<i>James L. Collins</i> . . . . .	27	<i>Lori Higgins, Anwar Ghauri, and Ashok Sinha</i> . . . . .	97
<b>A Conceptual Model for Sources of Oils in Gulf Coast Cenozoic Reservoirs</b>		<b>Depositional Facies, Porosity Loss, and Cementation in the Upper Cretaceous Mooreville and Demopolis Chalks, Central Alabama</b>	
<i>Doris M. Curtis</i> . . . . .	37	<i>Ira Holston and David T. King, Jr.</i> . . . . .	105

## Technical Papers GCAGS (continued)

- |  |   |
|--|---|
| <p><b>Predicting Paleostucture from Estimated Ultimate Recoveries</b><br/><i>Peter Hutchinson</i> ..... 113</p> <p><b>Influence of Reservoir Heterogeneity on Gas-Resource Potential for Geologically Based Infill Drilling, Brooks and I-92 Reservoirs, Frio Formation, South Texas</b><br/><i>Mary L. W. Jackson and William A. Ambrose</i> .. 127</p> <p><b>Petrology and Hydrocarbon Potential of the Ferry Lake Anhydrite, Caddo-Pine Island Field, Caddo Parish, Louisiana</b><br/><i>Colin E. Kimball, E. G. Anderson, Austin A. Sartin, and Leonard M. Young</i> ..... 141</p> <p><b>Seismic Fracture Identification and Horizontal Drilling: Keys to Optimizing Productivity in a Fractured Reservoir, Giddings Field, Texas</b><br/><i>Nanette Kuich</i> ..... 153</p> <p><b>Geothermal Patterns of Louisiana Salt Domes</b><br/><i>Madhurendu Bhushan Kumar</i> ..... 159</p> <p><b>Gypsum Dehydration, Agent of Salt Diapirism</b><br/><i>D. H. Kupfer</i> ..... 171</p> <p><b>Practical Exploration Model for the Smackover Formation</b><br/><i>Robert B. Lieber</i> ..... 183</p> <p><b>The Norphlet Reservoir in Mobile Bay; Origins of Deep Porosity</b><br/><i>Brian E. Lock and Samuel W. Broussard</i> ..... 187</p> <p><b>The "Frisco City Sand": A New Jurassic Reservoir in Southwest Alabama</b><br/><i>Steven D. Mann, Robert M. Mink, Bennett L. Bearden, and Robert D. Schneeflock, Jr.,</i> ..... 195</p> <p><b>Secondary Porosity in Sandstones and Diagenesis of Adjacent Shales, Oligocene, South Texas</b><br/><i>David A. McMahon</i> ..... 207</p> | <p><b>Effect of Fractures on Reserve Calculations as Determined by Petrology: Birthright Field, Hopkins County, Texas</b><br/><i>Hugh J. Mitchell-Tapping</i> ..... 221</p> <p><b>Subsurface Temperature Distributions in South Texas</b><br/><i>Deborah S. Pfeiffer and John M. Sharp, Jr.</i> .... 231</p> <p><b>Stratigraphy of the Glen Rose Formation, Western Gulf Coastal Plain</b><br/><i>Jeffrey G. Pittman</i> ..... 247</p> <p><b>The Off-Shelf Portion of the Harris Delta: A Re-examination of the Downdip Woodbine-Eagleford of East Texas</b><br/><i>Mark H. Porter, Dewitt C. Van Siclen, and Robert E. Sheriff</i> ..... 265</p> <p><b>An Advanced Interpretation Technique Integrates Well Log and Core Data For Thin-Bed Reservoir Evaluation</b><br/><i>Ashok Sinha, Tony Lawrence, and Bill Simmons</i> 267</p> <p><b>Depositional Facies and Eustatic Effects in the Upper Cretaceous (Maastrichtian) Ripley Formation, Central and Eastern Alabama</b><br/><i>Michael C. Skotnicki and David T. King, Jr.</i> ... 275</p> <p><b>Regional Biostratigraphy and Paleoenvironmental History of the Miocene of Onshore and Offshore Alabama</b><br/><i>Charles C. Smith</i> ..... 285</p> <p><b>New Perspectives on Geo-Genetic Linkages Among Salt Structures, Gulf Coast Source Rocks and Hydrocarbon Generation</b><br/><i>Douglas F. Williams and Ian Lerche</i> ..... 303</p> <p><b>Controls on H<sub>2</sub>S Concentration and Hydrocarbon Destruction in the Eastern Smackover Trend</b><br/><i>William J. Wade, Jeffrey S. Hanor, and Roger Sassen</i> ..... 309</p> |
|--|---|

## Technical Papers GCS/SEPM

- Diagenetic Resetting of Sm-Nd Isotope Systematics in Wilcox Group Sandstones and Shales, San Marcos Arch, South-Central Texas**  
*David N. Awwiller and Lawrence E. Mack* . . . . . 321
- Sequence Stratigraphy of the Mississippi Delta**  
*Ron Boyd, John Suter, Shea Penland* . . . . . 331
- Origin and Development of Quaternary Terrigenous Inner Shelf Sequences, Southwest Florida**  
*Richard A. Davis, Jr. and Jonathan M. Klay* . . . . . 341
- Controls on the Location of the Sand/Mud Contact Beneath a Barrier Island: Central Isles Dernieres, Louisiana**  
*John R. Dingler and Thomas A. Reiss* . . . . . 349
- Sedimentary Environments of the Inner Continental Shelf, Northeastern Gulf of Mexico**  
*Joseph F. Donoghue* . . . . . 355
- Paleoecology of the Eocene Wheelock Member of the Cook Mountain Formation, in Western Houston County, Texas**  
*Barbara A. Gaskell* . . . . . 365
- Stratigraphic Relationships Between *Odontogryphaea Thirsae* Beds and the Big Shale of the Wilcox (Paleocene-Eocene) in Louisiana**  
*Lloyd N. Glawe* . . . . . 375
- Global Controls of Barrier Island Chain Morphology and Distribution**  
*Virginia Henderson and Orrin H. Pilkey* . . . . . 385
- Physical Characteristics and Aging of Gulf Coast Estuaries**  
*Wayne C. Isphording, F. Dewayne Imsand, and George C. Flowers* . . . . . 387
- Massive Sediment Bypassing of a Wide Tidal Inlet; Cat Island Pass, Louisiana**  
*Bruce E. Jaffe, Asbury H. Sallenger, and Jeffrey H. List* . . . . . 403
- Inner Shelf Deposits of the Louisiana-Mississippi-Alabama Region, Gulf of Mexico**  
*Jack L. Kindinger, Shea Penland, S. Jeffress Williams, and John R. Suter* . . . . . 413
- Geochemistry of Formation Water, Plio-Pleistocene Reservoirs, Offshore Louisiana**  
*L. S. Land, and G. L. Macpherson* . . . . . 421
- Erosion and Deterioration of the Isles Dernieres Barrier Island Arc, Louisiana, U.S.A.: 1853 to 1988**  
*Randolph A. McBride, Shea Penland, Bruce Jaffe, S. Jeffress Williams, A. H. Sallenger, Jr., and Karen A. Westphal* . . . . . 431
- Lithofacies Changes in the Porters Creek Formation (Paleocene) of Southern Alabama**  
*Ernest A. Mancini and Berry H. Tew* . . . . . 445
- Evaluation of Changes in Beach Morphology Along the Louisiana Barrier Island Coast**  
*L.D. Nakashima* . . . . . 453
- The 1985 Hurricane Impacts on the Isles Dernieres, Louisiana: A Temporal and Spatial Analysis of the Coastal Geomorphic Changes**  
*Shea Penland, Karolien Debusschere, Karen A. Westphal, John R. Suter, Randolph A. McBride, and P. Douglas Reimer* . . . . . 455
- Holocene Sand Shoals Offshore of the Mississippi River Delta Plain**  
*Shea Penland, John R. Suter, Randolph A. McBride, S. Jeffress Williams, Jack L. Kindinger, and Ron Boyd* . . . . . 471
- Historical Back Barrier Shoreline Changes, Padre Island National Seashore, Texas**  
*Jennifer Smith Prouty and Daniel B. Prouty* . . . . . 481
- Sea-Level Rise and Subsidence in Louisiana and the Gulf of Mexico**  
*Karen E. Ramsey and Shea Penland* . . . . . 491
- The Role of Salt Marsh Erosion in Barrier Island Evolution and Deterioration in Coastal Louisiana**  
*Denise J. Reed* . . . . . 501
- Seafloor Features on Mississippi-Alabama Outer Continental Shelf**  
*Richard Rezak, William W. Sager, J. Scott Laswell, and Stephen R. Gittings* . . . . . 511

## Technical Papers GCS/SEPM (continued)

- |   |  |
|---|--|
| <p><b>Winter Storm Impacts on the Chenier Plain Coast of Southwestern Louisiana</b><br/><i>Harry H. Roberts, Oscar K. Huh, S. A. Hsu, Lawrence J. Rouse, Jr., and Douglas A. Rickman</i> 515</p>            | <p><b>Review of Geology of Mississippi Salt Domes Involved in Nuclear Research</b><br/><i>Charles T. Swann</i> ..... 543</p>   |
| <p><b><sup>13</sup>C-Depleted Authigenic Carbonate Buildups from Hydrocarbon Seeps, Louisiana Continental Slope</b><br/><i>Harry H. Roberts, Roger Sassen, Robert Carney, and Paul Aharon</i> ..... 523</p> | <p><b>The "Gulf of Mexico" Late Holocene Sea Level Curve</b><br/><i>William F. Tanner and S. Demirpolat, Frank W. Stapor, and Luis Alvarez</i> ..... 553</p>   |
| <p><b>Relict Progradational Beach Ridge Complex on Cat Island in Mississippi Sound</b><br/><i>James B. Rucker and Jesse O. Snowden</i> ..... 531</p>  | <p><b>Glacial Eustatic Controls on Seismic Sequences and Parasequences of the Trinity/Sabine Incised Valley, Texas Continental Shelf</b><br/><i>Mark A. Thomas and John B. Anderson</i> ..... 563</p>  |
| <p><b>Processes of Barrier Island Erosion</b><br/><i>Asbury H. Sallenger, Jr. and S. Jeffress Williams</i> 541</p>  | <p><b>Distribution and Textural Character of Surficial Sediments, Isles Dernieres to Ship Shoal Region, Louisiana</b><br/><i>S. Jeffress Williams, Shea Penland, and Ronald C. Circé</i> ..... 571</p> |



## Poster Session Abstracts GCAGS

- The Influence of Navigation on the Enlargement of White Lake, Vermilion Parish, Louisiana**  
*Richard U. Birdseye* ..... 577
- Variations in Miocene Fluvial Architecture: Bedload System of the Uppermost Goliad Formation Around Lake Corpus Christi State Park, South Texas**  
*Frank G. Cornish* ..... 578
- Alarming Changes In Sedimentation Rates In Major Bays Along The Gulf Coast**  
*Sheri M. George* ..... 579
- Sediment Transport and Progradation in the Atchafalaya-Wax Lake Outlet-Chenier Plain Sedimentary System, Southwest Louisiana**  
*Oscar K. Huh, Harry H. Roberts, Lawrence J. Rouse, Jr., and Douglas A. Rickman* ..... 580
- Modern Ostracodes in Shallow-Water Marine Carbonates, Northeastern Yucatan Shelf, Mexico**  
*Paul R. Krutak and Raul Gio-Argaez* ..... 581
- Facies and Diagenesis of the Lower Anhydrite Stringer Member, Rodessa Formation (Lower Cretaceous), Friendship and Iron Lake Fields, Cass and Marion Counties, Texas**  
*Kenneth Landrum* ..... 582
- Seismic Stratigraphy of Upper Neogene Shelf Break Position Variations Between East and West Offshore Louisiana**  
*Allen Lowrie and Neil M. Sullivan* ..... 584
- Depositional Environment and Diagenesis of the Benbrook Member of the Goodland Formation (Lower Cretaceous), Sabine Parish, Louisiana**  
*R. Dean McPhearson and Leonard M. Young* ... 585
- Application of High-Resolution Geophysical and Geotechnical Techniques for Selecting Artificial Reef Sites on the Louisiana Outer Continental Shelf**  
*David L. Pope, Thomas F. Moslow, and John B. Wagner* ..... 586
- Reef-Like Carbonate Buildups On The Louisiana Continental Slope**  
*Harry H. Roberts, Roger Sassen, Robert Carney, Paul Aharon, and Ralph Portier* ..... 587
- La Casita Sandstones: Evidence for the Composition of Basement Rock in Northeastern Mexico**  
*C. R. Smith and A. E. Weidie* ..... 588
- The Annual-Tide Tidal Flat Near Boca Chica, Texas**  
*William F. Tanner and Richard Hummell* ..... 590
- Quantitative Chemical Stratigraphy of Offshore Exploration Wells of the Flexure Trend: Spectral Coherency Analysis**  
*Douglas F. Williams, Ian Lerche, Zhihuai Yu, Xidong Chen, and Dwight M. Trainor* ..... 591

# REPORT OF THE PRESIDENT

## Gulf Coast Association of Geological Societies

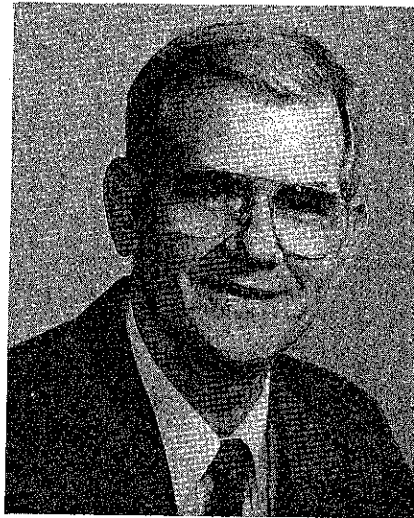
*Wm. R. Payne, President*

Corpus Christi is privileged to host the 39th annual meeting of the Gulf Coast Association of Geological Societies. We hope you will return home as in past years with new exploration ideas and motivation to discover a major field.

As we go into the last decade of this century GCAGS remains a healthy organization and has weathered tough times because of past leadership having the vision to set goals through long range planning.

We are a well organized association with standing committees that continue to function smoothly year after year through the efforts of volunteer geologists who are proud of their association and their profession. As we step into the nineties, our organization continues to carry out the objectives of its founders.

Because of successful conventions in past years, and the work of the Finance Committee headed by Gerald A. Cooley, GCAGS is financially sound. Again this year the Student Aid Committee, chaired by Richard W. Boebel, awarded grants to twenty students from Gulf Coast universities. Other Committee Chairmen are: Stewart Chuber, Awards and Nominations; David E. Pope, Historical; Edward



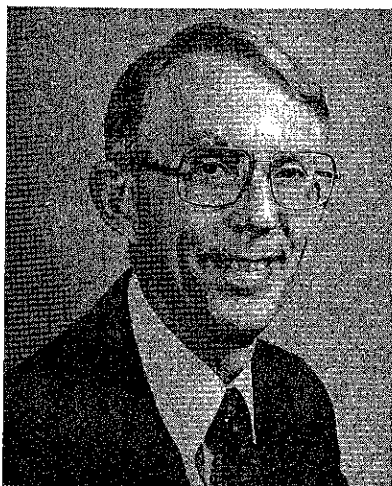
C. Roy, Jr., Long Range Planning; and Robert E. Boyer, Publications. This year Robert W. Sabate' was appointed as our Representative to the A.A.P.G. Advisory Council, succeeding Robert E. Boyer, who has served with distinction for the past three years

In 1988 the Executive Committee voted to establish the office of Executive Secretary for GCAGS effective January 1,

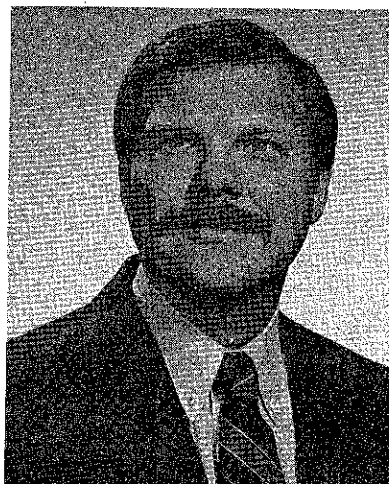
1989. Birdena Schroeder was elected to this position. Birdena has worked for Earth Enterprises in Austin, Texas for many years and is well acquainted with the membership and operations of GCAGS. Birdena will be a major asset in providing permanent housing for our files and a central location for maintenance of Association business.

My personal thanks is extended to all who have helped GCAGS during the past year. Jerry Heinzelmann, as General Chairman, has done an excellent job of planning and arranging this convention. The Committee Chairmen and their committees have been dedicated to achieving a successful convention. Carlos M. Maggio, Program Chairman, and Wayne S. Croft, Editor, have worked many long hours to provide you a valuable source of geological information that will be used for many years to come. A special note of thanks goes to past president Jim Hartman for his support and timely advice.

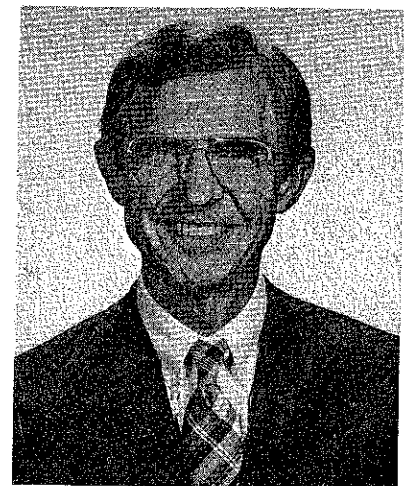
We welcome you to Corpus Christi! It is a pleasure to have you here, and it is our desire that you enjoy the convention, including the technical sessions, the field trips, and the social activities, as well as our beautiful city.



**VICE PRESIDENT**  
Peter G. Gray



**SECRETARY**  
Bruce E. Gaither



**TREASURER**  
Thomas B. Henderson

# REPORT OF THE PRESIDENT

## Gulf Coast Section

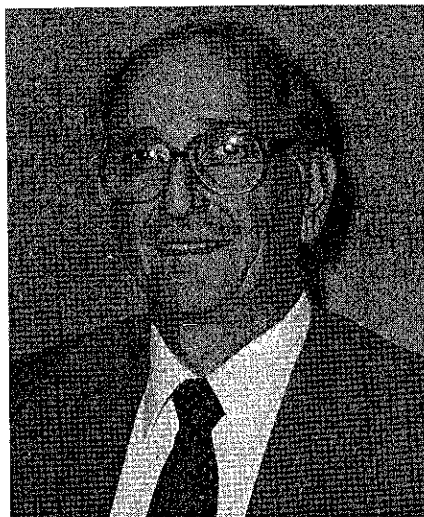
### Society of Economic Paleontologists and Mineralogists

*Samuel P. Miano, President*

Welcome to Corpus Christi and the 39th. Annual Meeting of the GCAGS. Our section is now thirty-seven years old and still vibrant. As stated in Article One of our bylaws, "The object of the Gulf Coast Section of the Society of Economic Paleontologists and Mineralogists is to promote the science of stratigraphy in the Gulf Coast States through research in paleontology and sedimentary petrology, especially as it relates to petroleum geology." We have honored this pledge.

Again, we have been fortunate to have able and dedicated section members to serve as committee chairman for this meeting. Special thanks to Vice Chairman, Thomas H. Fett, Program Chairman, Richard Q. Foote, Editor, Jennifer Smith Prouty, and Awards and Judging Chairman, Michael J. Nault. It should be noted that our committee members received excellent cooperation from the planning committee of the GCAGS.

The Ninth Annual Research Conference, "Geochemistry of Gulf Coast Oils



and Gases: Their Characteristics, Origin, Distribution, Exploration and Production Significance," was held in New Orleans, December 4-7, 1988. The Conference was attended by 151 researchers, and twenty-eight papers were presented, supplemented by posters, special exhibits, and an evening open forum.

The Tenth Annual Research Conference "Gulf of Mexico Salt Tectonics, Associated Processes and Exploration Potential" will be held in Houston, December 10-13, 1989. The preliminary list of speakers and topics list twenty-eight presentations.

These highly successful Research Conferences are made possible through the financial support of the GCS/SEPM Foundation, and the efforts of our current Trustees are Clarence C. Albers, William P. Ventress, and John L. Carney.

I sincerely thank my fellow officers for their cooperation and support throughout my term of office on the Executive Council: Sheila C. Barnette (President Elect), Charles C. Smith (Vice President), Richard H. Fillon (Secretary), Bethanne Breisacher (Treasurer), and a special note of thanks to Arthur S. Waterman (Past President) and Bob F. Perkins (GCS/SEPM Foundation Executive Director) for their guidance.

# REPORT OF THE GENERAL CHAIRMAN

## Thirty-Ninth Annual Meeting—1989

*G.M. Heinzelmann, General Chairman*

The Sparkling City by the Sea, the Nation's sixth largest port, the deepest port on the Gulf of Mexico, future home of the Texas State Aquarium, home port for the battleship Wisconsin and aircraft carrier Lexington, and the hub of the Nation's largest natural gas province bids you a big South Texas hello. This last fact fits well with the convention theme of "Energy into the 90's", because we feel that natural gas, in the next decade, will affect all of us greatly. So on behalf of the Corpus Christi Geological Society, we are pleased to welcome you to our city and the 39th annual meeting of the Gulf Coast Association of Geological Societies.

We are following the lead of the New Orleans Convention Committee, and are having a panel discussion of the convention theme as a portion of the opening session. We contracted with the AAPG Convention Group to help organize and handle a lot of details since we are a much smaller Society than the New Orleans or Houston Societies. I do want to say a special thank you to Nancy Means of the AAPG Convention Group and to Bruce Lemmon, AAPG Exhibits Manager, who did an excellent job for us.

As everyone knows, a convention or meeting is only as good as the people who have put a lot of time and effort into it. We had twenty-six committees that began working about two years ago, and now can see the fruits of their labor. I thank all of the Committee Chairmen and Co-Chairmen for all their help and participation.



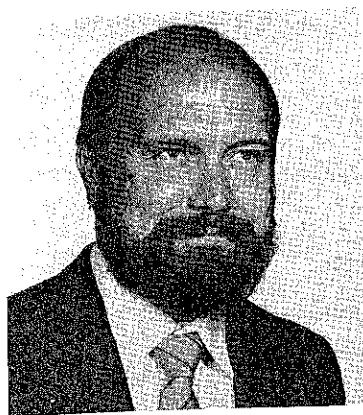
We are offering an excellent program of technical papers to be presented at sessions of the GCAGS and the GCS/SEPM. Additionally, we are offering two poster sessions to continue the trend set in New Orleans. Convention attendees also have a choice of three excellent short courses, and four pre-convention field trips, one of which is a four day affair into Mexico.

The entertainment activities include the ever popular Icebreaker Cocktail Party in the Convention Center Exhibit Hall on Wednesday night, and A TASTE OF OLD CORPUS CHRISTI on Thursday night. This event will be held in our Heritage Park area adjacent to the Convention Center. The sporting events, which will all be held on Wednesday include a golf tournament at Northshore Country Club, a tennis tournament and racquetball tournament to be held at the Corpus Christi Athletic Center. Now the wives and

spouses are going to have fun with all the activities planned for them including a luncheon style show, a trip to scenic Rockport and a King Ranch tour.

I thank Bill Payne, GCAGS President, who invited me to serve as General Chairman. As a result, I had the opportunity to be associated with an outstanding group of dedicated people. My Vice-Chairman and Secretary, Bruce Gaither, helped in so very many ways until Bruce and Kathy moved to Albuquerque early in June. I depended on the council and help of Tom Henderson, the GCAGS Treasurer, Paul Strunk, past President of the GCAGS, and Don Boyd, an active GCAGS friend. I would also like to especially thank Carlo Christina, President of the New Orleans Geological Society, who took it upon himself to contact the companies that contributed to the GCAGS in 1988 in order to help keep the registration cost within reach of most of our members. Through Carlo's efforts and the efforts of Paul Strunk, Don Boyd and Bill Payne, we were able to reduce our registration fee even more. Thank you gentlemen and companies for your help and understanding.

As the 1989 GCAGS Convention gets underway, it is our sincere belief that we are beginning to make a comeback in our industry, and with the decontrol of natural gas and the environment coming more into focus, it looks like a decade of growth and demand for our product. Let's look ahead to "Energy into the 90's" with great anticipation.



**Wayne S. Croft,  
Editor, GCAGS**

It is difficult, if not impossible, to practice geology in the Gulf region without referring to the *Transactions*. Probably the most important annual publication of the area, it has always offered a diverse array of papers bound together mainly by their common focus on the Gulf region. This may explain the unique appeal of the *Transactions*; it is used by all of us: petroleum geologists, government geologists, consultants, and academics.

This 39th volume differs from the first in several ways. It has obviously increased in size through the years. The papers reflect the changing interests of our profession. If anything, they have become more diverse. This volume contains papers on topics ranging from biostratigraphy to formation fracture characteristics, geochemistry, hydrocarbon migration, sea level curves, seismic stratigraphy, and shoreline erosion.

We wish to thank the many authors who so graciously worked with us throughout the editing process. Their cooperation and prompt responses enabled us to finish within our printer's

## REPORT OF THE EDITORS GCAGS-GCS/SEPM

deadlines and, we hope, to produce a volume in which we can take pride.

Our colleagues on the Editorial Committee were indispensable. We thank them all: Larry Billingsley, Danny Burns, Steve Campbell, Jim Collins, Frank Cornish, Judy Croft, Margaret Freed, Tom Freund, Kathy Nelms Gaither, Ray Govett, J. R. Jones, Smitty Leonard, Mike Pusley, Carroll Pyle, Roger Steinberg, and Mary Thorpe. Volunteering many hours of their time, they provided careful and critical reviews and their insights contributed greatly to the quality of the papers. Special thanks go to Associate Editors Judy Croft and Ed Hoffmann, who took care of myriad details in a timely fashion, allowing the editors to concentrate on their primary job, editing the papers.

Some authors submitted papers on diskettes and most others were successfully scanned optically into a computer, but remaining papers were typed into a computer. For this we thank our patient secretaries: Barbara Carlson (for



**Jennifer S. Prouty,  
Editor, GCS/SEPM**

Croft) and Irene Valdez (for Prouty). Editing, cleanup, and formatting were done via computer, and they ably assisted in these tasks.

It was a pleasure to work with Stacy Buntrock of Hart Information Systems as we prepared these manuscripts. Hart Information Systems scanned and typeset the papers, and Stacy provided advice and prompt, professional assistance during each stage of the process. We thank her staff as well for their excellent work.

We hope that this volume of the *Transactions* is as widely read, copied, and borrowed from libraries and colleagues as previous volumes have been; it is surely a great tradition.

Wayne S. Croft

Jennifer S. Prouty

# OFFICERS AND COMMITTEES

## 39th Annual Meeting

### OFFICERS

<b>President</b>	William R. Payne, Sagex, Inc.
<b>Vice President</b>	Peter G. Gray, Independent Geologist, Lafayette, La.
<b>Secretary</b>	Bruce E. Gaither, Geoscience Consultants, Ltd.
<b>Treasurer</b>	Thomas B. Henderson, Henderson Exploration

### 1989 CONVENTION CHAIRS

<b>General Chairman</b>	Gerry E. Heinzelmann, Independent Geologist
<b>Vice Chairman GCAGS</b>	Bruce E. Gaither, Geoscience Consultants, Ltd.
<b>Vice Chairman GCS/SEPM</b>	Thomas H. Fett, Schlumberger

### TECHNICAL PROGRAM

<b>Chairman GCAGS</b>	Carlos M. Maggio, Coastal Oil & Gas Corp.
<b>Chairman GCS/SEPM</b>	Richard Q. Foote, U.S. Geological Survey

# 1989 CONVENTION COMMITTEES

Advertising	<b>Owen R. Hopkins, Harkins &amp; Co.</b>	Registration	<b>Richard R. Railsback, DeKalb Energy</b>
Arrangements	<b>Duane Hecklesberg, Petroleum Management, Inc.</b> <b>Rod G. Einspanier, Petroleum Management, Inc.</b>	Spouse Chairperson	<b>Rozine Thompson</b>
Audio Visual	<b>James B. Brewster, Core Service, Inc.</b> <b>John L. Oliver, Core Service, Inc.</b>	Assistant Spouse Chairperson	<b>Kathy Hardy</b>
Crisis	<b>Paul M. Strunk, American Shoreline</b>	Kathy Railsback	<b>Ina Bell Uri</b>
Distinguished Visitors	<b>Don R. Boyd, Gulf Coast Exploration</b>	Alan Costello	<b>Francie Easley</b>
Editing-GCAGS	<b>Wayne S. Croft, Royal Oil &amp; Gas</b> <b>Larry A. Billingsley Blair-Vreeland</b> <b>Steven M. Campbell, CPX Petroleum</b> <b>James L. Collins, TXO Production Corp.</b> <b>Frank G. Cornish, TXO Production Corp.</b> <b>Alan T. Costello, Royal Oil &amp; Gas Corp.</b> <b>Judy Croft, Independent</b> <b>Margaret Freed, Independent</b> <b>Tom C. Freund, Texas A &amp; I University</b> <b>Edward A. Hoffmann, Enron Oil &amp; Gas</b> <b>James R. Jones, Jr., Consultant</b> <b>Carroll A. Pyle, Independent</b> <b>Smitty Leonard, Royal Oil &amp; Gas Corp.</b>	Katie Costello	<b>Betty Collins</b>
Editing-GCS/SEPM	<b>Jennifer Smith Prouty, Corpus Christi State University</b> <b>Danny Burns, Bee County College</b> <b>Frank Cornish, TXO Production Corp.</b> <b>Cathy Nelms Gaither, Independent</b> <b>Ray Govett, Independent</b> <b>Mike Pusley, Enron Oil &amp; Gas</b> <b>Roger Steinberg, Independent</b> <b>Mary Thorpe, Delmar College</b>	Mary Hewell	<b>Ruth Knapke</b>
Employment Assistance	<b>Sebastian P. Wiedmann, Corpus Christi Oil &amp; Gas Co.</b>	Rhonda Broughton	<b>Joyce Forney</b>
Entertainment	<b>John G. Drake, TXO Production Corp.</b> <b>Julie S. Moore, Cox Oil &amp; Gas</b>	Debby Cleckley	<b>Vickie Jones</b>
Exhibits	<b>Steven M. Campbell, CPX Petroleum</b>	Steve Adams	<b>Joni Becker</b>
Field Trips	<b>Dr. Jon A. Baskin, Texas A &amp; I University</b> <b>Frank G. Cornish, TXO Production Corp.</b>	Tammy Trace	<b>Betty Barklow</b>
Housing	<b>Alan T. Costello, Royal Oil &amp; Gas</b>	Matt Hammer	<b>Jenn Peeler</b>
Judging and Awards/GCAGS	<b>George K. Fegan, Sagex, Inc., Judging</b> <b>Clifford R. McTee, Solana Corp., Awards</b> <b>Billy C. Johnson, Independent</b> <b>Charles Roe, Independent</b>	Kim Hammer	<b>Louise Clarkson</b>
Judging and Awards/GCS/SEPM	<b>Michael J. Nault, Chevron U.S.A., Inc.</b>	John Drake	<b>Lois Hyndman</b>
Program GCAGS	<b>Carlos M. Maggio, Coastal Oil &amp; Gas Corp.</b>	Cindy Drake	<b>Janet Rice</b>
Program GCS/SEPM	<b>Richard Q. Foote, U.S. Geological Survey</b>	Trionne Williams	<b>Betty Sebring</b>
Publicity	<b>Philip O. Gaston, Exxon Co. U.S.A.</b>	Julie Otwell	<b>Sherry Smith</b>
		Gloria Sprague	<b>Diane Schena</b>
		Jeff Osborn	<b>Cheryl Boyd</b>
		Lou Lambiotte	<b>Carolyn Baker</b>
		Barbara Schulz	
		Short Course	<b>William A. Walker, Tana Oil &amp; Gas Corp.</b>
		Sporting Activities	<b>Hollis D. Marshall, Consultant</b>
		Golf	<b>Ronny G. Thomas, Independent</b>
		Racquetball	<b>Tammy L. Trace, Tana Oil &amp; Gas Corp.</b>
		Tennis	<b>Ray Govett, Consultant</b>
		Spouse Activities	<b>Kathy Einspanier</b>
		Co-Chairperson	<b>Jeanne Luker</b>
		Hospitality	<b>Deanna Payne—Hostess Chairperson</b> <b>Donna Mayo—Craft Chairperson</b> <b>Deana Strunk—Program Chairperson</b>
			<b>Lisa Bosch</b> <b>Estelle Johnson</b>
			<b>Bea Fisher</b> <b>Jane Jacobs</b>
			<b>Lynn Campbell</b> <b>Betty Clark</b>
			<b>Dorothy Davidson</b> <b>Belinda Collins</b>
			<b>Margaret Fox</b> <b>Linda Page</b>
			<b>Kathy Haack</b> <b>Barbara Herber</b>
			<b>JoAnn Franke</b> <b>Debbie Douglas</b>
			<b>Dorothy Maggio</b> <b>Patricia Boyd</b>
			<b>Ozello Oliver</b> <b>Julie Nye</b>
			<b>Laura Aurre</b> <b>Marion Wiedmann</b>
			<b>Helen Easley</b> <b>Twan Brady</b>
		Holiday Fete	<b>Jean McCullough, Chairperson</b>
			<b>Anita McCullough</b> <b>Anne Hopkins</b>
			<b>Mary Claughton</b> <b>Catherine Lundberg</b>
			<b>Elsie McTee</b> <b>Carol Vacca</b>
			<b>June Owen</b> <b>Nancy Marshall</b>
			<b>Helen Easley</b> <b>Toni Robertson</b>
		Area Tours	<b>Carol Vacca, Chairperson</b>
			<b>Sally Williams</b>
			<b>Joanne Griesbach</b>
			<b>Mary Claughton</b>
		Tobin Theater	<b>Mary L. Hewell, Seisbanks, Inc.</b>
		Transportation	<b>H. Steven Saylor, Royal Oil &amp; Gas Corp.</b>

# HONORARY MEMBERSHIP

## GCAGS (Posthumous Award)

### *James Allen Gilreath*

James Allen Gilreath is known throughout the petroleum community as having been the foremost expert on the interpretation of dipmeter data. Hardly a day passed that he was not called upon to provide his expertise for a difficult well from some remote part of the world.

Al was a native of Cartersville, Georgia. After serving in the Army Air Corps during World War II, he graduated with a BSEE from Georgia Tech in late 1948.

He joined Schlumberger in January, 1949 and moved through the ranks of Field Engineer, District Manager, Senior Sales Engineer, Applications Development Engineer and Advanced Applications Development Engineer. After more than 40 years of service with Schlumberger, Al retired early in 1989 and formed a consulting firm.

In the late 1950's, Al developed the "pattern" method of dipmeter interpretation. This technique, which was to become the foundation of virtually all modern dipmeter interpretation, was first published and presented at the 1960 GCAGS Convention in Biloxi. Since then he has authored and/or co-authored six additional papers which were delivered at GCAGS conventions. Included in these papers were a "Best Paper" award and a "Second Best Paper" award.



Throughout his life, Al continued to develop and refine the answers from dipmeter data. As his experience grew, he developed a technique to determine water depth at time of deposition and interpretive techniques for eolian depositional environments. In the late 1970s, Al wrote the rule base and provided the technical expertise for the development of a computer-based interpretation of dipmeter data. This geologically interactive system is in widespread use today. He is widely recognized as having been an excellent instructor and spent much of his life teaching others his techniques. Al was a prolific writer and during his career had

more than 45 technical papers published.

Al was a very supportive member of GCAGS and has served at all of their New Orleans' conventions. He also was very active in the New Orleans Geological Society and served that organization as Treasurer, 2nd Vice President, Vice President and Director. He was distinguished lecturer for AAPG, Vice-Chairman of AAPG House of Delegates, and served several terms on the AAPG Membership Committee.

At the time of his death this past spring, Al had been married to Shirley Courtney Gilreath for more than 43 years and their outstanding family of four children and nine grandchildren were a particular source of pride to him.

Al Gilreath was a true professional. His unselfish contributions to the geological community, his company, and the petroleum industry are universally recognized. It is indeed fitting that this award of Honorary Membership in GCAGS is bestowed upon him.

—B.C. Leach

*ED NOTE: Al Gilreath passed away this spring. He was proud to have been selected as an honorary member of the GCAGS.*



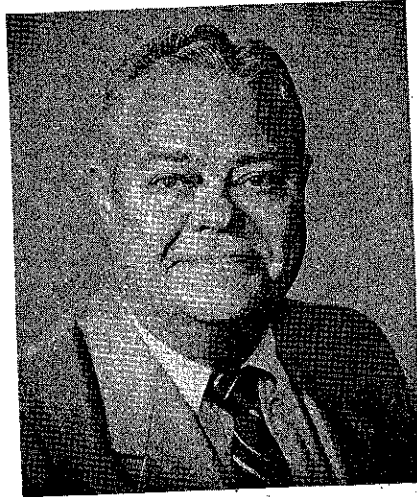
# CITATION FOR DISTINGUISHED SERVICE AWARD

## GCAGS

*H. Grady Collier, Jr.*

Grady Collier was born in Wichita Falls, Texas, and attended public schools there. He entered the University of Texas in Austin in 1943 and received his B.S. in Geology in 1949 after a two and one half year interruption to serve in the U.S. Merchant Marine Cadet Corps and the U.S. Army Air Corps in the Pacific, Philippine Islands, and Japan. From 1949 to 1950 he worked on a Petty seismic crew, leaving to become an oil scout for British American Oil Producing Co. in Shreveport, Louisiana. By the time he resigned in 1966 he had become New Orleans Division Manager for the North Louisiana, South Arkansas, Southeastern States and South Louisiana, offshore and on-shore areas. From 1966-68 he was Manager of Exploration and Production for Franks-Grigsby, Inc. in New Orleans, Louisiana. During the period 1968-1970 he was with King Resources Company as southern Division Exploration and Production Manager. Since 1970 he has been an independent consulting geologist in New Orleans.

He was president of the New Orleans Geological Society in 1967 and a director in 1968 and again from 1978-81. In



1985 he was awarded an honorary life membership. He was committee chairman for the first volume in that society's series, "Oil and Gas Fields of Southeast Louisiana," and the contributor of the Westwego-Avondale study. He was on the Membership Committee of AAPG in 1967 and, in the years since he came to New Orleans has served on the GCAGS and AAPG convention committees in various capacities.

Grady has always been interested in the relationship of the geologist to the oil

and gas industry, to the public, and to government. This interest was shown in his chairmanship of the NOGS Employment Counseling Committee between 1977 to 1982 and the Geological Registration Committee from 1981 to 1987. He has been chairman, vice chairman, and director of the Society of Independent Professional Earth Scientists' New Orleans Chapter. In the period 1984-87 he was Director, Secretary, and Vice-President of the national SIPES organization and President, Vice-President, Secretary, and Director of the SIPES Foundation.

In awarding Grady Collier its Distinguished Service Award, the GCAGS is recognizing one of the best known and best liked geologists in its area. He has enjoyed success as a company geologist and manager and as an independent geologist, yet has found time to work in the affairs of the geological organizations to which he belonged. What sets him apart also is a friendly and gregarious manner and a willingness to help others. Many a geologist has turned to him for guidance or help and found it.

—Lee H. Meltzer

# CITATION FOR DISTINGUISHED SERVICE AWARD

## GCAGS

*Rudolf B. Siegert*

**Rudolf B. (Rudy) Siegert** was born in St. Louis, Missouri and raised in Pana, Illinois. While studying for his B.S. in geology at the University of Illinois he played football and served as team captain in 1955. After graduation in 1956 he served in the U.S. Army for two years, emerging as a First Lieutenant. He then went to Texas A & M where he received his M.S. in 1961 and was elected to Sigma Xi and Phi Kappa Phi.

Rudy and Peggy Vest were married in 1957. They have four children and three grandchildren, live in Slidell, Louisiana, and spend free time both at their farm in Mississippi and their beach house in Florida.

Rudy began his career with Texaco and spent ten years on various assignments in the Gulf Coast. When he left he had advanced to District Geologist for the Southeastern states. In 1971 he became a consultant and independent producer in New Orleans, moving his office to Slidell in 1987. He is a successful independent, but success has not turned his head. Rudy is always willing to assist anyone who is starting out on his own. I know because he helped me and I am forever grateful for it.



Rudy has been a tireless worker for our profession. For the New Orleans Geological Society he has been president, vice-president, director twice, and has chaired or served on numerous committees. During his presidency, Rudy was the driving force to establish the Memorial Scholarship Fund and, to date, more than 40 college students have benefited from this fund. He also established the Technical Projects Committee which has been responsible for many of the society's popular publications. NOGS presented its Honorary

Life Membership Award to him in 1986.

For the GCAGS, Rudy has served on the Board of Directors and has chaired, co-chaired, or served on annual convention committees for Tobin Theater, Publicity, and Programs. For the AAPG, he has represented the NOGS in the House of Delegates and has served on the Public Information, Public Affairs, and Membership Committees. Currently he is a Trustee Associate. Other professional affiliations include the Lafayette and Houston Geological Societies, SIPES, AIPG, SGS, and SPWLA. Industry affiliations include IPAA, LAIPRO, and LENPAC.

Rudy has been a contributor of his time, talents, and resources to our profession. He is a gentleman and a man of ability and quiet competence, but above all, of integrity. His enthusiasm and zest for life rub off on all who come in contact with him. Rudy is truly most deserving of the Distinguished Service Award.

*—James A. Hartman*

# SPECIAL RECOGNITION AWARD

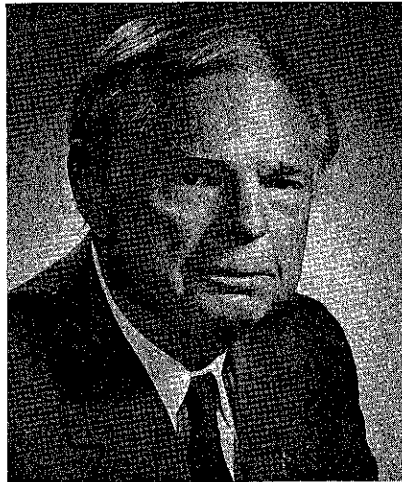
## GCAGS

### *DON F. TOBIN*

Don Freeman Tobin was born in Casper, Wyoming, November 23, 1915. He attended public schools in Denver, Colorado then attended the University of Colorado, receiving his B.A. degree in Geology in 1937.

Don was employed by Cities Service Oil Co. and worked on seismograph crews in Kansas, Michigan, and Texas before being assigned to their San Antonio office as a geologist. On the outbreak of WW II, he left Cities Service for war service training at the University of Texas and thereafter served as a meteorology and navigation instructor for the Army Air Corps. During this period he also completed work for a law degree from St. Mary's University in San Antonio.

Following his discharge from the service, Don was employed by Carter Oil Company in Jackson, Mississippi and Shreveport, Louisiana. In 1946 he returned to San Antonio to work with Harold Herndon at the Saltmount Oil



Company. He has been an independent geologist and oil operator since 1950, founding Rio Bravo Royalty Company and the South Texas Gas Company.

Don's association with geological professional organizations has been as a member of AAPG since 1937, a member of the South Texas Geological Society, an AAPG delegate, and a member

of AIPG. In addition to his geologic affiliations, he is a member of the Texas Bar and the American Bar Associations. He served as general chairman for the regional meeting of the GCAGS in 1987, and in 1989 was general chairman of the meeting of the AAPG in San Antonio.

Married to the former Peggy Portwood of San Antonio, Don Tobin has lived for some years on the family ranch in Bandera County while maintaining offices in San Antonio. The Tobins have eight children, five sons all involved in some phase of the oil business, and three daughters. As of 1989, there were nine grandchildren.

Don has given unselfishly of his time and talents to the South Texas Geological Society, the GCAGS and the AAPG. He is truly deserving of this Special Recognition Award.

—*E.A. Hoffmann*

# HONORARY MEMBERS

## GCAGS

J. J. Amoruso (1987)	S. J. Lysinger (1983)
R. R. Berg (1985)	J. O. Lewis (1983)
D. R. Boyd (1982)	L. H. Meltzer (1982)
J. Braunstein (1982)	W. R. Paine (1984)
W. L. Fisher (1986)	E. C. Roy, Jr. (1983)
J. A. Gilreath (1989)	C. L. Sartor (1986)
M. T. Halbouty (1982)	F. L. Smith, Jr. (1983)
F. W. Harrison, Jr. (1982)	W. L. Stapp (1988)
H. N. Hickey (1982)	P. M. Strunk (1983)
R. J. LeBlanc, Sr. (1984)	M. O. Turner (1984)

# DISTINGUISHED SERVICE AWARDS

## GCAGS

1982	R. E. Boyer	P. B. Souders	B. C. Tucker
1983	none awarded		
1984	A. T. Green, Jr.	DeWitt C. Van Sicken	
1985	C. E. Harrison	R. W. Stephens, Jr.	
1986	none awarded		
1987	none awarded		
1988	none awarded		
1989	H. G. Collier, Jr.	R. B. Seigert	

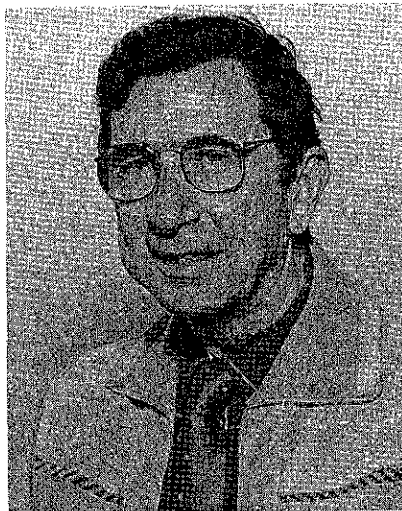
# HONORARY MEMBERSHIP

## GCS/SEPM

### *Emmett Ray Adams*

EMMETT RAY ADAMS was born in Paris, Mississippi on November 18, 1923; however, at an early age his family moved to Forest Hill, Louisiana. In this small town south of Alexandria, Adams was raised; from an early age he developed a keen interest in geology and archeology from his excursions in local creek beds looking for fossils and exploring Indian middens. Unfortunately, his early life was disrupted by two major events, the Great Depression of the mid 1930's and World War II. Adams served his country during the war as an infantryman and was involved in front line action throughout Germany.

In 1946 he enrolled at Louisiana State University to pursue his formal education in geology. He fondly recalls courses taught by Drs. Andy Anderson, Grover Murray, Jim Morgan, and Fred Kniffen. Each had his own style, yet imparted valued knowledge and increased each student's observational abilities of all things geological. After completing his B.S. degree in 1950, Adams joined Shell Oil Company in Jackson, Mississippi. Although he had specialized in paleontology at LSU, his early assignments channelled him into the field of physical stratigraphy. Working with staff associates Rainy Rainwater and Jules Braunstein, he was given excellent tutelage. Additional training by legendary Shell researchers such as Rufus LeBlanc, Bob Dunham, and Frank Lozo kept him abreast of developments in studies of siliciclastics and carbonates, and he would immediately incorporate these new findings into his exploration activities. Through the years he became an authority on Smackover and lower Tuscaloosa geology and published many papers on the stratigraphic aspects of these formations. A paper he co-authored discussing the geological aspects and the



continuing development of Little Creek field in south Mississippi was presented at the 1989 AAPG Annual Convention.

In 1966 Shell relocated his division to New Orleans, where he continued his exploration activities until his retirement in 1981. To capitalize on Adams' knowledge of Mesozoic regional geology and in prospect development, management assigned him the task of training and nurturing many fledgling exploration geologists. Adams' love of people, coupled with his easy manner and ability to excite his "students" concerning their mapping projects, made this a very rewarding assignment for him as well as the company.

From the earliest days in his career, Adams recognized the importance and value of participating in professional organizations. While in Jackson he served the Mississippi Geological Society as Vice President and Treasurer, and on field trip committees. Adams was

a charter member of the Gulf Coast Section of SEPM. This very early (1953) association and involvement with the GCS/SEPM continued through the years as he has variously served the Section as Treasurer, Vice-President, and as President in 1974. Along the way he found time to be a Business Representative both in Jackson and New Orleans, and served on the Nominations Committee for many years. Field trips have always been one of Adams' favored specialties and he has been involved in many field trip committees, some as chairman for SEPM, GCS/SEPM, GCAGS, AAPG, and the New Orleans Geological Society. In 1960 he co-edited the Transactions volume for the Biloxi meeting. For the New Orleans AAPG Convention, Adams handled the responsibilities of Vice-Chairman for SEPM and chaired the Field Trip Committee.

Through the years Adams has always been loyal and kept close ties to the Geology Department at LSU. He has served as a member of the Geology Alumni Advisory Council and as Vice President and President of the Geology Alumni Association.

He has given almost four decades of continuous service to the geological profession and to the many organizations identified above, unselfishly and in so many capacities, especially the GCS-SEPM. It is in recognition of these achievements, demonstrated leadership, and most of all, his sincere friendship to all, that the Section honors itself by recognizing Adams as an Honorary Member.

—Edward B. Picou, Jr.

# HONORARY MEMBERSHIP

## GCS/SEPM

### *Jack O. Colle*

**JACK O. COLLE** was born in Pascagoula, Mississippi. In 1938 he received his Bachelor of Science degree in geology from Louisiana State University. After graduation, Colle accepted a job as a sample washer in the Stanolind paleo lab in Houston. Later that year, he was hired as a paleontologist by the late Hersh C. Ferguson, a consulting geologist and paleontologist. By this time, electric logging was in its infancy and "paleo" was the data base used by geologists for correlation.

In 1942 Colle's career was interrupted by World War II. He served in the Army Air Corps until 1946 at which time he was honorably discharged with the rank of Major. He returned to Houston and resumed his job with Hersh C. Ferguson. In 1949 Colle opened his own office as a consultant.

Operating as Jack Colle & Associates, he performs consulting geological and paleontological services for both independent operators and major oil companies. While Colle's work centers on the Texas Gulf Coast, he has also worked on projects in other Gulf Coast states and in such countries as Mexico, Barbados, the Dominican Republic, and Guatemala. During his 40 years in business, Colle has earned the respect of his peers not only because of his expertise as a geologist and paleontologist but



also because of his honesty and professional integrity.

Colle has been an active member of the Houston Geological Society (HGS) since 1938. In 1950 he was elected as Secretary and served on the Executive Committee. He has served on numerous committees and has served two separate terms as HGS representative to AAPG.

In addition to HGS, Colle has been active in other organizations. He joined AAPG as a student member in 1937 and became an active member in 1939. He served as Vice-President of the Gulf

Coast Section of SEPM in 1957 and as President in 1958. He is a charter member of SIPES and a member of the original Board of Directors. He was Secretary-Treasurer of the State Section of AIPG from 1974-1975 and President from 1976-1977. Colle is a member of the Paleontological Society and the Paleontological Research Institution. He is also a charter member of the Terra Club, formed by HGS members.

His publications include a geological note on the Clodine field in Fort Bend County, Texas, published in the AAPG Bulletin. He was co-author of "Sedimentary Volumes of Gulf Coast Sediments," published in the Geological Society of America Bulletin.

Colle was awarded Honorary Memberships in the HGS (1980) and in SIPES (1988) in recognition of his dedication and contributions to these organizations.

Because of Colle's nearly 50 years of distinguished service to the profession, it is befitting that the additional honor of Honorary Membership be bestowed on him by the Gulf Coast Section of SEPM.

—James G. Ward

# HONORARY MEMBERSHIP

## GCS/SEPM

*John B. Dunlap, Jr.*

**JOHN B. "JACK" DUNLAP, JR.** is active in service to the Gulf Coast Section of SEPM and is recognized for his contributions to the petroleum industry in the Gulf Coast because of his work in paleontology and sedimentation. The Gulf Coast Section of SEPM therefore selects him for honorary membership.

Dunlap was born and raised in Dallas, Texas. He attended Texas A & M University, receiving his B.S. degree in 1954 and his Master's degree in 1955. After graduating, Dunlap served as First Lieutenant in the First Armored Division of the U.S. Army until 1957.

Dunlap began his career with Humble Oil and Refining Company in 1957 as a geologist and paleontologist. There he trained and worked in Gulf Coast foraminifera until 1966 when he began work as a consulting paleontologist. He was one of the original partners in the consulting firm of Paleo-Data, Inc. and has remained there as a consultant from 1968 to the present.

At Paleo-Data, Inc. Dunlap was active in both research and application of new ideas in the Gulf of Mexico. His dedication to the field of paleontology made him an exceptional student and excellent teacher, which helped the firm grow and enriched the knowledge of many geologists in this area. Dunlap's early work in Pleistocene stratigraphy



and sedimentation in the Gulf of Mexico was based upon examination of hundreds of wells on the continental shelf and several core holes on the slope. It became used as a guide for many oil companies in their Pleistocene exploration.

Dunlap was one of the first stratigraphers to recognize the viability and exploration potential of deep water sedimentation. His concepts of shelf margin deposition as a primary target, put forth in a 1968 proprietary study, served as a model within the industry for future development of offshore exploration.

Dunlap is a charter member of the Gulf Coast Section of SEPM and has served it well since its beginning. He was its 13th president from 1965 to 1966 and a member and first Chairman of the Board of Trustees of the GCS/SEPM Foundation from 1981 to 1984. He co-chaired the GCAGS-GCS/SEPM convention in 1988 and received second place in the first Best Paper competition (1971).

Dunlap is a member of the New Orleans, Houston, Lafayette and Dallas Geological Societies and has presented papers to each of them. He has also presented papers at the Geological Society of America's Annual Convention and the GCS/SEPM Research Conference. Dunlap has been a member of AAPG since 1964 and has been active in various conventions.

Dunlap and his wife, Alma, are also involved in many civic activities. His hobbies reflect his varied interests and enthusiasm: he enjoys opera, running, military history, and raising orchids and bromeliads.

All of his contributions to the Gulf Coast Section of SEPM and to his profession more than qualify him for honorary membership.

—*T. Wayne Campbell*

1989  
**DISTINGUISHED SERVICE AWARD**  
GCS/SEPM

**Awarded to:**  
*Dennis Joseph Greig*

**DENNIS JOSEPH GREIG**, an SEM Technologist with Chevron U.S.A. Inc., is the recipient of the 1989 Distinguished Service Award of the Gulf Coast Section, Society of Economic Paleontologists and Mineralogists.

Greig was born in New Orleans, Louisiana on August 20, 1944, and shortly thereafter the Greig family moved to Metairie, Louisiana where Greig spent his boyhood. He attended the University of New Orleans from 1961-1965 and majored in zoology and biology. In 1965 he joined the U.S. Navy and served four years as a member of the U.S. Navy intelligence service in Viet Nam and the Canal Zone.

Greig joined Chevron U.S.A. Inc. in New Orleans in late 1969 as a Paleontology Technical Assistant and specialized in Tertiary and Quaternary foraminifera in the offshore Louisiana areas. In 1975 his duties were expanded to encompass scanning electron microscopy, and he currently operates Chevron's Gulf Coast SEM facility as an SEM Technologist.



Greig has been a member of the Gulf Coast Section of SEPM for 20 years and has participated in many section activities during that period. In 1980 he became the Section's New Orleans area Business Representative and continues to serve in that capacity. Greig combines a likeable personality, a penchant for hard work, and a strong desire to

contribute to any enterprise that he joins. The Gulf Coast Section of SEPM has been the fortunate recipient of these talents. Greig has not only been an excellent Business Representative, but he has made major contributions to other Section activities, especially the annual research conferences. In particular, his organizational talents and behind-the-scenes logistical efforts were primary factors that contributed directly to the success of the 1982 conference on "The Jurassic of the Gulf Rim." Greig continues to provide valuable service to the Section far beyond the scope of Business Representative. Whatever the need, he is always willing and available to help.

Therefore, we present the Distinguished Service Award in great appreciation to Dennis Greig for his sincere interest and unfailing service to the Gulf Coast Section of SEPM.

—*William P. S. Ventress*



# 1989 DISTINGUISHED SERVICE AWARD GCS/SEPM

**Awarded to:**  
*Thomas H. Fett*

**THOMAS H. FETT**, a petrophysicist and Application Development Engineer with Schlumberger Well Service, is the recipient of the 1989 Distinguished Service Award of the Gulf Coast Section, Society of Economic Paleontologists and Mineralogists.

Fett graduated in 1966 with a B.S. in engineering science from Trinity University. Immediately following graduation, he began his long association with Schlumberger Well Service in positions ranging from Field Engineer and Station Manager to District Manager in Alice, Pharr, Graham, and Corpus Christi, Texas. He has specialized in well log evaluations of tight rocks of South Texas, identifying and exploiting clastic depositional environments, applications of dipmeters and interpretation of dipmeter logs, and formation evaluations. Since 1978, he has taught senior and graduate level courses in log evaluation for the Natural Gas Engineering Department of Texas A&I University in Kingsville, Texas.

Fett's work for Schlumberger has included presentations on well logging in many parts of the world, including Houston, Dallas, Denver, Paris, Calgary, Tokyo, London, and Singapore.



Interspersed with his travels and other varied activities, he has presented short courses and technical papers at meetings of the Society of Professional Well Log Analysts, the Society of Petroleum Engineers, the American Association of Petroleum Geologists, and numerous local geological society meetings.

Fett is a member of the Society of Economic Paleontologists and Mineralogists, American Association of Petroleum Geologists, American Petroleum Institute (API), Society of Petroleum Engineers (SPE), Society of

Professional Well Log Analysts (SPWLA), Houston Geological Society, San Antonio Geological Society, Corpus Christi Geological Society, and Coastal Bend Geophysical Society. He supports and actively participates in the affairs of these organizations. He has served in many capacities, such as Vice Chairman of the 1981 and 1989 GCAGS/GCS-SEPM Annual Meetings, 1982 General Chairman for SPWLA, International Director for SPWLA, Secretary for SPWLA, and Past President and Vice President of the Corpus Christi Chapter of SPWLA. He has also served as the Past Director of the Corpus Christi chapter of SPE of AIME, Past Director of the Corpus Christi Chapter of API, and Business Representative for GCS/SEPM since 1985.

This award is in recognition of his dedication and service to the Gulf Coast Section of SEPM, and of his contributions to the geological and petroleum societies in the Gulf Coast.

— *Richard Q. Foote*

# DISTINGUISHED HONORARY MEMBER

## GCS/SEPM

### *Charles G. Ventress*

In sincere appreciation of his long standing generosity to the Gulf Coast Section/SEPM Foundation, the Gulf Coast Section/SEPM is pleased to bestow upon Charles Galloway Ventress the title of Distinguished Honorary Member. Mr. Ventress is the first recipient of this new honor that was created to acknowledge non-member benefactors to the Gulf Coast Section/SEPM and Foundation.

Charles Galloway Ventress was born on August 30, 1898, in Woodville, Mississippi. After serving in the U.S. Army field artillery in World War I, he entered Milsaps College in Jackson, Mississippi in 1919, and graduated in 1923 with a bachelor of arts

degree. Mr. Ventress settled in Jackson and worked there for some 40 years as office manager and secretary for the R.F. Kennington Company. Following his retirement, he remained in Jackson until ill health forced him to move to Slidell, Louisiana in late 1988.

Although Mr. Ventress was never a student of geology, from his youth he had a keen interest in the science and the petroleum industry. Through this interest and later business associations with oil and gas leasing and other aspects of the industry in Mississippi, Mr. Ventress gained an appreciation of the value and service that organizations like the Gulf Coast

Section/SEPM and Foundation provide to the geological and biostratigraphic segments of our industry. Mr. Ventress expressed this appreciation by extending generous financial support to the Gulf Coast Section/SEPM Foundation first in 1982 and on a continuing annual basis since that time.

Therefore, it is fitting that the first Distinguished Honorary Member award be presented to Mr. Ventress in recognition of his outstanding support of the Gulf Coast Section/SEPM.

—*W.P.S. Ventress*

---

# HONORARY MEMBERS

## GCS/SEPM

---

Ester Applin (1964)  
Alva C. Ellisor (1964)  
Marcus A. Hanna (1964)  
Henry V. Howe (1964)  
Hedwig T. Kniker (1964)  
Winnie McGamery (1964)  
John R. Sandidge (1964)  
J. B. Garrett, Jr. (1965)  
E. H. Rainwater (1966)  
Henryk Bronislaw Stenzel (1971)  
Jules Braunstein (1973)  
Grover E. Murray (1973)  
Harold V. Anderson (1975)  
Lyman D. Toulmin (1975)  
Doris M. Curtis (1977)

Stuart A. Levinson (1978)  
Fred L. Smith, Jr. (1978)  
Charles W. Stuckey (1978)  
William R. Paine (1980)  
Frank E. Lozo, Jr. (1981)  
Gene B. Martin (1984)  
Bob F. Perkins (1984)  
Edward B. Picou, Jr. (1984)  
Claude M. Quigley, Jr. (1986)  
William P. S. Ventress (1986)  
Donald G. Bebout (1987)  
David E. Pope (1987)  
Emmett Ray Adams (1989)  
Jack O. Colle (1989)  
John B. Dunlap (1989)

---

# DISTINGUISHED HONORARY MEMBER

## GCS/SEPM

Charles G. Ventress (1989)

---

# DISTINGUISHED SERVICE AWARDS

## GCS/SEPM

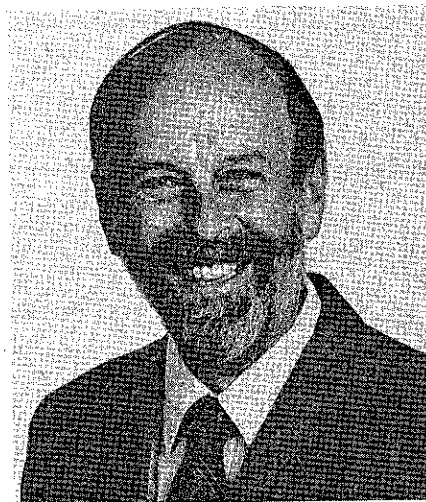
Thomas H. Fett (1989)  
Dennis Joseph Greig (1989)

# 1988-1989 OFFICERS

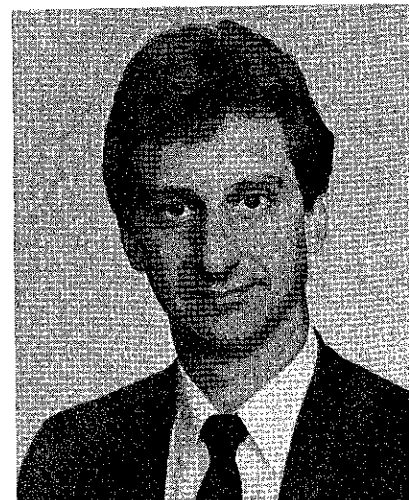
GCS/SEPM



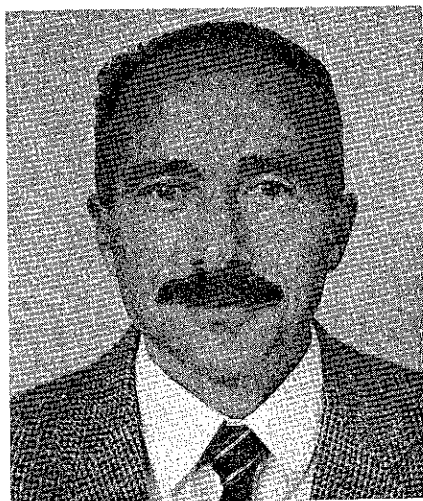
**President-Elect**  
*Sheila C. Barnette*



**Vice President**  
*Charles C. Smith*



**Past President**  
*Arthur S. Waterman*



**Secretary**  
*Richard H. Fillon*



**Treasurer**  
*Bethanne Briesacher*

# 1988 BEST PAPER AWARDS

## GCAGS

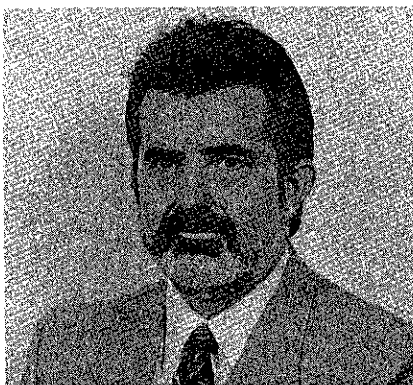
### First Place awarded to:

**Michael P. Prescott**

For:

*South Lake Arthur Field and Occurrence of Buried Structures Along Ougocene Trend of Southwestern Louisiana.*

Michael P. Prescott is the President of Big M Exploration, Inc. of Houston, Texas. He received his bachelors degree in Geophysics in 1969 and a masters degree in Engineering Management in 1973 from the University of Texas.



Michael P. Prescott

During his eighteen years in the petroleum industry, he held the positions of Exploration Geophysicist for Gulf Oil Corp. and Getty Oil Co., and Consulting Geophysicist, R. Brewer and Co. In 1984, he founded Big M Exploration, Inc. to concentrate on play and prospect generation. More recently he has been involved in the generation of high potential natural gas prospects in south Louisiana.

### Second Place and A.I. Levorsen Award awarded to:

**J.J. O'Brien and Ian Lerche (Speaker)**

For:

*"Impact of Heat Flux Anomalies on Hydrocarbon Maturity Around Salt Diapirs and Salt Sheets in Gulf Coast: Models and Observations"*

John O'Brien received his B.S. degree in physics from the National University of Ireland, and subsequently earned his Ph.D. in nuclear physics from the University of Pittsburgh in 1976. Following two years on the research staff of the Physics Department at Yale University, he joined Gulf Research and Development Co. There he worked on seismic data analysis and mathematical modeling of geologic processes, in particular those related to salt deposits. Since 1983 he has worked for Standard Oil (now BP Exploration) on Alaska North

Slope exploration and on geophysical projects related to developments of North Slope reservoirs. O'Brien has published extensively in geophysics, geology, nuclear and atomic physics, and co-edited "Dynamical Geology of Salt and Related Structures", published in 1987. He is a member of SEG, APS and AAPG.

Ian Lerche received a B.Sc. in 1962 and his Ph.D. in astronomy from the University of Manchester, England. During the period 1965-1981 he was a member of the Physics Department faculty of the University of Chicago. From 1981 to 1984 he was employed by Gulf Research and Development Company (GRDC), as a Research Associate in Geophysics. He has been a Professor of Geology at the University of South Carolina since 1984. Lerche is a recipient of the Alfred P. Sloan Foundation Fellowship (1966-1968), Alexander von Humboldt Senior U.S. Scientist Award

(1974-75), Visiting Professor at M.I.T. (1975), visiting principal research officer at the Division of Radiophysics at C.S.I.R.O., Sydney, Australia (1977-1979), visiting research scholar (GRDC)(1980-1981), and a Fellow of the Royal Astronomical Society. He is also an active member of S.E.G. and a member of AAPG. He recently (1989) received the Dupont Award for Science and Engineering. His main fields of current research are quantitative basin analysis, salt dynamics, isotope chronostratigraphy, and theoretical seismic development. Lerche has published over 330 papers on a wide variety of subjects; has co-edited one book on Salt Dynamics, co-authored one on Isotope Chronostratigraphy, and is sole author on two volumes dealing with Quantitative Methods in Basin Analysis. He along with Doug Williams also won third place best paper at the 1988 GCAGS Convention.

**Third Place awarded to:*****Douglas F. Williams  
(speaker) and Ian Lerche***

For:

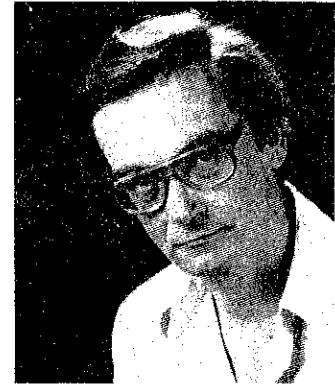
*"Organic Rich Source Beds and Hydrocarbon Production in Gulf Coast Region"*

**Dr. Douglas F. Williams** is Professor of Geological and Marine Sciences at the University of South Carolina, Columbia, SC. He is a member of AAPG and SEPM.

**Ian Lerche** received a B.Sc. in 1962 and his Ph.D. in astronomy from the University of Manchester, England. During the period 1965-1981 he was a member of the Physics Department faculty of the University of Chicago. From 1981 to 1984 he was employed by Gulf Research and Development Company (GRDC), as a Research Associate in Geophysics. He has been a Professor of Geology at the University of South Carolina since 1984. Lerche is a recipient

**Douglas F. Williams**

of the Alfred P. Sloan Foundation Fellowship (1966-1968), Alexander von Humboldt Senior U.S. Scientist Award (1974-75), Visiting Professor at M.I.T. (1975), visiting principal research officer at the Division of Radiophysics at C.S.I.R.O., Sydney, Australia (1977-1979), visiting research scholar (GRDC)(1980-1981), and a Fellow of the Royal Astronomical Society. He is also an active member of S.E.G. and a member of AAPG. He recently (1989)

**Ian Lerche**

received the Dupont Award for Science and Engineering. His main fields of current research are quantitative basin analysis, salt dynamics, isotope chronostratigraphy, and theoretical seismic development. Lerche has published over 330 papers on a wide variety of subjects; has co-edited one book on Salt Dynamics, co-authored one on Isotope Chronostratigraphy, and is sole author on two volumes dealing with Quantitative Methods in Basin Analysis.

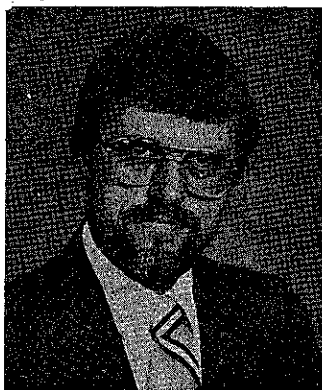
# 1988 BEST POSTER AWARDS

## GCAGS

### First Place awarded to:

#### *Glenn M. Pense*

Glenn M. Pense is a Staff Geologist at Mobil Exploration & Producing Services Inc. in Dallas Texas. He holds B.S. and M.S. degrees from Christian University. His Master's thesis was a geochemical study of the Banco Bonito Rhyolite at the Jemez Caldera, New Mexico. Pense has been with Mobil Exploration & Producing Services Inc.



Glenn M. Pense

since 1980. He is currently evaluating the effects of diagenesis on clastic reservoirs and working on the development and application of SEM-based petrographic image analysis. Before joining Mobil, Pense spent three years with core Labs in a Special Core Analysis group and a total of six years with the Amon Carter Museum of Western Art and U.S. Navy as a photographer.

### Second Place awarded to:

#### *John A. Adamick and Austin A. Sartin*

For:

*"Depositional Analysis of Hill Sand of Rhodessa Formation (Lower Cretaceous) in North Shongaloo-Red Rock Field, Webster Parish, Louisiana"*

John A. Adamick received his undergraduate degree in Geology from Texas A&M University in 1983. During the summers of 1981 and 1982, he worked for Shell Oil Company's seismic exploration group in Texas and Louisiana. In 1984, Mr. Adamick entered the Graduate School at Stephen F. Austin State University. There, he successfully completed a regional thesis study on the "Depositional and Diagenetic Analysis of the Hill Sand of North Louisiana and South Arkansas". In 1987, he graduated with a Master of Science degree. He is currently working as a geologist for TGS Offshore Geophysical Company in Houston, Texas. Most of his interpretation work at TGS is focused on delineating sub-horizontal salt flows and salt piercements in the Gulf of Mexico. He is an active member of the



John A. Adamick

Houston Geological Society and the American Association of Petroleum Geologists and is an associate member of the Society of Exploration Geophysicists.

Austin A. Sartin is the William C. Woolf Professor of Geology and Chairman, Department of Geology, Centenary College. He received a B.S. degree from Centenary College (1959), a M.S. degree from the University of Arkansas (1966) and a Ph.D. degree from Southern Methodist University (1972). He was a member of the faculty at the University of Southwestern Louisiana and



Austin A. Sartin

Stephen F. Austin State University before assuming his present position at Centenary College in 1985. At Stephen F. Austin he was coordinator of geology graduate programs and directed thirty theses. Sartin has authored or co-authored numerous professional papers and technical reports dealing with the depositional and diagenetic histories and facies analyses of surface and subsurface units in the Gulf Coast region and north-central Texas. He has served as President of Sigma Gamma Epsilon since 1986 after having served as the Southeastern Province Vice President from 1977-1986. He is a member of the American Association of Petroleum

Geologists and Geological Society of America, a Certified Professional Geologist of the American Institute of Pro-

fessional Geologists, President of the Shreveport Club of Sigma Xi, a Fellow in the Texas Academy of Science, and a

member of the Board of Directors of the Shreveport Geological Society.

### Third Place awarded to: *Harry Roberts and James Coleman*

#### Harry H. Roberts

Marine geology (high resolution seismic and side-scan sonar surveys), process-response interactions along deltaic and carbonate coasts; coastal and shelf sedimentation; sediment diagenesis.

#### Education

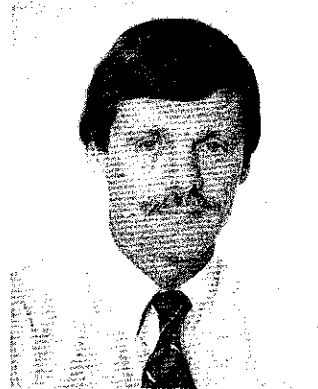
Marshall University, B.S., Physics, 1963

Louisiana State University, M.S., Geology, 1966

Louisiana State University, Ph.D., Geology, 1969

#### Professional History

Instructor, Coastal Studies Institute, LSU, 1968-70; Assistant Professor, CSI and Dept. of Marine Sciences, LSU, 1970-73; Associate Professor, CSI and Dept. of Marine Sciences, LSU, 1973-78; Professor, CSI and Dept. of Marine Sciences, LSU, 1978-85; CSI and Dept. of Geology and Geophysics, 1985-present; Assistant Director, Coastal Studies Institute, LSU, 1985-89; Director, Coastal Studies Institute, LSU, 1989-Present; Geological Consultant to petroleum companies and service organizations on problems of shelf and slope geohazards (sediment core analysis and interpretation of high-resolution geophysical data); Consultant to U.S. Army Corps of Engineers on problems of deltaic sedimentation and subsidence; Consultant to engineering companies on coastal sedimentation and sediment stability problems; Consultant to both domestic and foreign petroleum



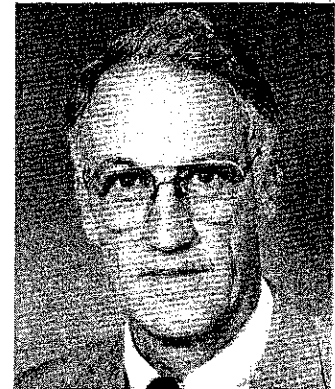
Harry H. Roberts

companies for training, short courses on both deltaic and carbonate sedimentation; field trip leader for industry to both modern carbonate and deltaic environments.

#### Representative Experience

Field-oriented research projects in carbonate and terrigenous clastic settings (since 1968). Projects related to wide variety of coastal, shelf, and deep basin problems (sedimentation, physical processes, geomorphology, and ecology). Specific studies focused on deltaic and shelf sedimentation (Atchafalaya and modern Mississippi deltas), form-process relationships in reef and reef-associated environments, diagenesis of both terrigenous and carbonate sediments, and sediment transport. Worked on DSDP Leg 96 cores from the deep Gulf of Mexico. Taught in Marine Sciences and Geology and Geophysics departments at LSU.

Field investigation involving high resolution acoustic and physical oceanography data collection have been conducted both domestically and along



James M. Coleman

a variety of foreign coasts, including Grand Cayman Island (BWI), Barbados, Granada, Dominican Republic, Puerto Rico, Nicaragua, Brazil, Oman, Egypt, St. Croix, Red Sea (Israel and Egypt), and Indonesia (eastern Java Sea).

Active as a consultant to oil industry on problems of geological hazards, sedimentation, and high-resolution geophysical data interpretation. Engineering firms, consulting agencies, and other types of companies have used services on problems of coastal engineering and sedimentation. Also has taught applied geology short courses on deltas and carbonate sedimentation systems both domestically and in foreign countries.

#### Affiliations

Sigma Xi; Society of Economic Paleontologists and Mineralogists; International Association of Sedimentologists; American Shore and Beach Society; American Association of Petroleum Geologists; International Society for



Reef Studies, Baton Rouge Geological Society.

#### Honors

Advisory editor for two international journals, chair and co-chair of sessions at national meetings, appointed to Earth Science Steering Committee for the NASA Geostationary Platform Program, elected to the International Association of Biological Oceanographers (IABO) Coral Reef Committee, invited speaker at national and international meetings, contributor to several books, winner of three best paper awards (GCAGS and SEPM), and recipient of research grants in national competition since 1969.

#### Publications

Has published more than 100 professional journal articles and technical reports on both basic and applied geoscience.

#### James M. Coleman

Dr. James M. Coleman, acting dean of the College of Basic Sciences and head of the School of Geoscience of Louisi-

ana State University in Baton Rouge, has established an international reputation as one of the world's foremost authorities on deltas and on mass movement processes and slope instability in nearshore waters. He began his career at LSU with the Coastal Studies Institute in his undergraduate days. He became Assistant Director of the Institute in 1971 and Director in 1975.

Upon reestablishment of the School of Geoscience in 1985, he assumed the leadership in uniting the Department of Geology and Geophysics, Coastal Studies Institute, and Basin Research Institute into a cohesive education/research organization. The University component of the Louisiana Geological Survey also became a part of the School in 1988. In February 1989 he took on the duties of acting dean of the College of Basic Sciences and is currently also serving the University as chairman of the Chancellor Search Committee and chairman of the Committee on Naming University Facilities.

In 1983 Dr. Coleman was chosen co-chief scientist on Leg 96 of the Deep Sea Drilling Project, one of the largest international cooperative oceanographic programs ever undertaken in the world's oceans. He has received the Shepard Award for Excellence in Marine Geology from the Society of Economic Paleontologists and Mineralogists; and the A.I. Leverson Award, presented to the authors of the best paper presented at the Gulf Coast Association of Geological Societies; the Boyd Professorship, the highest honor LSU gives its faculty; the LSU Distinguished Research Master Award; and the LSU Foundation Distinguished Faculty Fellow Award.

The author of approximately 165 papers published in scientific journals, Dr. Coleman also lectures frequently and leads numerous field trips. He was chosen an American Association of Petroleum Geologists Distinguished Lecturer in 1976 and 1977.

# BEST PAPER AWARDS AND A. I. LEVORSEN MEMORIAL AWARDS GCAGS

	First Award	Second Award	Third Award	Levorsen Award*
1959	J. E. Walters	R. L. Oakes	H. A. Bernard C. F. Major, Jr. B. S. Parrott	
1960	Not awarded			
1961	R. D. Ocamb	D. I. Andrews J. C. Stipe	R. P. Fietz K. R. Scott W. E. Hayes	
1962	D. R. Tucker R. C. Wilshusen	R. J. Granberry W. R. Walton (tie)	G. C. Glaser (tie)#	
1963	E. H. Rainwater	V. Peppard	S. L. Blanton, Jr.	
1964	E. H. Rainwater	D. R. Boyd B. F. Dyer	J. L. Arps	
1965	C. R. Kolb J. R. van Lopik	G. R. Kellough	Not awarded	
1966	B. J. Sloan, Jr.	W. R. Paine	R. E. Gernant R. V. Kesling	B. J. Sloan, Jr.
1967	H. Yarborough, Jr.	W. A. Price	J. Ewing (tie) J. C. Meyers (tie)	H. Yarborough, Jr.
1968	J. D. Myers	E. H. Rainwater	D. J. Hughes	J. D. Myers
1969	P. O. Roehl	J. K. Rogers	D. F. McNamee (tie) L. F. Brown (tie)	J. K. Rogers
1970	J. J. Amoruso	R. R. Berg	J. F. Harris	J. J. Amoruso
1971	H. Yarborough, Jr.	D. A. Reel (tie) G. M. Griffin B. J. Sloan (tie) J. A. Hartman (tie)	Not awarded	H. Yarborough, Jr.
1972	R. R. Berg	M. T. Halbouty	J. J. Amoruso	R. R. Berg
1973	R. D. Woods J. W. Addington	R. D. Ottman P. L. Keyes M. A. Ziegler	R. R. Berg R. L. Findley	J. M. Coleman L. D. Wright
1974	D. H. Kupfer	J. M. Coleman L. D. Wright J. N. Schyda T. Whelan	C. A. Parker	D. H. Kupfer
1975	W. L. Seal J. A. Gilreath	J. D. Myers	B. P. Baganz J. C. Horne J. C. Ferm	J. D. Myers

	First Award	Second Award	Third Award	Levorsen Award*
1976	J. D. Robinson A. R. Troell	J. W. Becher C. H. Moore	N. Neel	J. D. Robinson A. R. Troell
1977	D. K. Davies W. R. Almon	J. O. Lewis	J. O. Snowden W. B. Simmons E. B. Troughber R. W. Stephens	D. K. Davies W. R. Almon
1978	C. T. Siemers	J. W. Lund J. S. King R. E. Berlitz J. A. Gilreath	E. F. McBride	C. T. Siemers
1979	C. D. Winker	R. R. Berg	C. C. Christina K. G. Martin	R. R. Berg
1980	E. A. Mancini D. J. Benson	F. W. Harrison, Jr.	G. N. Gatenby	E. A. Mancini D. J. Benson
1981	E. C. Roy, Jr. M. Eidelbach N. Trumbly	J. L. Coleman, Jr. C. J. Coleman	G. J. Grabowski, Jr.	E. C. Roy, Jr. M. Eidelbach N. Trumbly
1982	T. E. Ewing S. C. Caran	D. J. Benson E. A. Mancini	R. R. Berg M. F. Habeck	T. S. Ewing S. C. Caran
1983	J. W. Cagle M. A. Khan	W. M. Ahr H. B. Hull, Jr.	T. E. Ewing(tie) C. H. Moore (tie)	J. W. Cagle M. A. Khan
1984	G. Kinsland	S. K. Stewart	C. L. Sartor S. R. Howard	G. Kinsland
1985	C. C. Walters M. R. Cassa	E. A. Mancini R. M. Mink B. L. Bearden	A. L. Workman J. S. Hanor	W. E. Galloway
1986	S. P. Dutton	A. H. Saller B. R. Moore	J. M. Coleman D. P. Prior H. H. Roberts	S. P. Dutton
1987	S. P. Dutton R. Finley K. Herrington	R. Evans	C. Black R. Berg	S. P. Dutton R. Finley K. Herrington
1988	M. P. Prescott	J. J. O'Brien I. Lerche	D. F. Williams I. Lerche	J. J. O'Brien I. Lerche

\*—This award is given by the AAPG to the paper that best exemplifies creative ideas in oil and gas exploration (first award, 1966).

#—Glaser and Walton received First Place in the Paleontology Division for their 1962 paper.

# 1988 BEST PAPER AWARDS GCS/SEPM

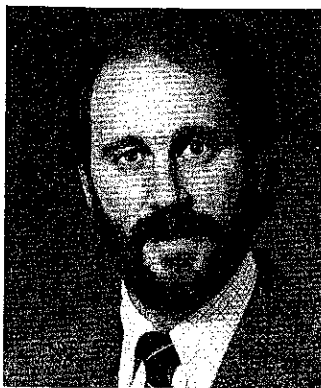
## BEST PUBLISHED PAPER AWARD

**Awarded to:  
Ron Boyd and  
Shea Penland**

For:

*"A Geomorphic Model for Mississippi  
Delta Evolution"*

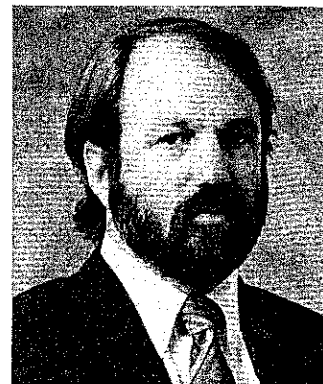
**RON BOYD** received his B.S. degree with honors from the University of Sydney, Australia in 1975. In 1980 he received his Ph.D. degree in marine geology from the University of Sydney as well. Boyd was a Visiting Professor in the Geology Department of Louisiana State University from 1980 to 1981, then transferred to the Louisiana Geological Survey as a marine geologist in 1981. He joined the Geology Department of Dalhousie University in 1982 as Assistant Professor, and was promoted to Associate Professor in 1986. Since 1986 he has also served as an Honorary Research Associate at the Louisiana Geological Survey. In 1988 he became Director of the Centre for Marine Geology at Dalhousie University.



**Ron Boyd**

Boyd is a member of the Society of Economic Paleontologists and Mineralogists. He currently teaches graduate and undergraduate courses in sedimentology and marine geology at Dalhousie University. His research interests include sea level and sequence stratigraphy, deltaic, glacial and shallow marine sedimentation, and participation in the Ocean Drilling Program.

**SHEA PENLAND** is the Chief Coastal Geologist and a Research Associate with the Louisiana Geological Survey in Baton Rouge. A native of Jacksonville, Florida, Penland received his B.A. from Jacksonville University and his



**Shea Penland**

M.S. from Louisiana State University (LSU). He is currently a Ph.D. candidate at LSU.

Over the last 10 years, Penland's career has focused on coastal geomorphology and geology research in the Beaufort Sea, North Sea, Great Lakes, British Columbia, Labrador, California, Florida, and the Gulf of Mexico. Current research activities include coastal erosion and wetland loss studies with the U.S. Geological Survey and non-energy mineral studies with the U.S. Minerals Management Service. He was awarded the 1986 and 1987 SEPM Excellence of Poster Presentation Award.

## EXCELLENCE OF PRESENTATION AWARD

Awarded to:  
**Edward McFarlan, Jr.**

For:

*"Subsurface Geology of the Late Tertiary and Quaternary Deposits, Coastal Louisiana and the Adjacent Continental Shelf"*

**EDWARD MCFARLAN, JR.** earned his B.A. degree from Williams College in Williamstown, Massachusetts, and his M.A. from the University of Texas at Austin. Upon graduation, he joined Humble Oil and Refining Company as a Geologic Research Associate. From 1948 to 1959, he served as principal investigator for studies in Laguna Madre, south Texas, the Mississippi delta, and coastal plains of Louisiana and Texas. From 1959 to 1966, McFarlan served as Humble's Southeastern Division Area Stratigrapher, supervising a large team conducting interdisciplinary regional exploration studies in the southeastern U.S. and offshore areas. After a comparable assignment from 1966 to



**Edward McFarlan, Jr.**

comparable assignment from 1966 to 1967 in Corpus Christi, he was appointed Manager of the Stratigraphic Geology Division of Exxon Production Research Company of Houston. He held that position from 1967 to 1973 and in that capacity was responsible for research in biostratigraphy, geochemistry, seismic stratigraphy and structural geology. From 1973 to 1986 he served as Senior Geological Scientist at Exxon Exploration Headquarters in Houston, and was principal investigator for studies involving three large regional exploration plays from south Texas to south Florida.

He retired from Exxon in 1986. Since then, he has been working as a consulting geologist on Pleistocene oil and gas plays in offshore Louisiana for the ER-ICO Exploration Systems Division of the Petroleum Information Company.

McFarlan has served as the 1965 Chairman and 1971 Vice Chairman of the SEPM Annual Meeting Program Committee. He was also a member of the AAPG Research Committee from 1968 to 1988 (serving as its Chairman from 1986 to 1988) and of the Executive Committee of the Houston Geological Society from 1984 to 1987. He served as the Vice President and Program Chairman of the Houston Geological Society from 1987 to 1988.

McFarlan's published research contributions have involved the sedimentary framework of the Mississippi deltaic plain of southwestern Louisiana. His investigations have also included the radiocarbon dating of the late Quaternary deposits of south and offshore Louisiana. His most recent work has concentrated on the Pleistocene stratigraphy of south and offshore Louisiana.

# BEST PAPER AWARDS

## GCS/SEPM

Best Published Paper		Excellence of Presentation	
1988	Ron Boyd Shea Penland	Edward McFarlan, Jr.	
1987	Wayne Isphording Dewayne Imsand George Flowers	Rowdy Lemoine Earle McBride	
1986	Douglas F. Williams Dwight M. Trainor	Robert R. Berg	
1985	Paul A. Thayer Harry H. Roberts	Gordon W. Fielder	
1984	M. J. Ulrich J. R. Kyle P. E. Price	M. Kontrovitz	
1983	E. C. Kosters A. Bailey	D. B. Prior	
1982	J. Mazzullo	C. D. Winker	
1981†	T. A. Daws A. V. Applegate J. C. Palacas	C. R. Handford	
	<b>First Place</b>	<b>Second Place</b>	<b>Third Place</b>
1980††	A. W. Cleaves	I. L. van Heerden H. H. Roberts	T. A. Hansen
1979	L. C. Price J. L. Clayton L. L. Rummen	C. W. Poag R. C. Tresslar	R. E. Casey L. W. Gust R. A. Reynolds D. H. Williams A. Leavesley T. Duis J. M. Spaw
1978	A. Thomson	C. W. Poag	J. A. Schiebout
1977	C. D. Winker J. D. Howard	W. C. Isphording	R. M. Looney V. R. Baker

	First Place	Second Place	Third Place
1976	C. J. Stuart C. A. Caughney	R. R. Berg R. R. Powell	C. W. Poag P. C. Valentine
1975	J. L. Wilson	K. F. Wantland M. E. York	W. C. Isphording
1974	G. M. Friedman	W. F. Tanner C. R. Berquist	R. J. Moiola D. Weiser A. B. Spencer
1973	W. F. Tanner	R. J. Moiola A. B. Spencer	P. A. Thayer (tie) W. J. Cleary E. O'Donnell (tie) A. P. Wright
1972	W. F. Tanner	A. E. Weidie J. L. Wolleben E. F. McBride	P. A. Thayer D. A. Textoris
1971	R. W. Maxwell, Jr.	C. W. Poag	E. A. Shinn
1970	W. W. Hay S. W. Wise, Jr. R. D. Stieglitz	J. B. Dunlap, Jr.	W. L. Fisher C. V. Proctor, Jr. W. E. Galloway J. S. Nagle

†— and Best Poster Award to E. A. Mancini

††Before 1981, awards were given for first, second and third place.

**1989**  
**EXECUTIVE COMMITTEE**  
**GCAGS**

---

**PRESIDENT**

William R. Payne  
P.O. Box 2465  
Corpus Christi, Texas 78403

**VICE  
PRESIDENT**

Peter G. Gray  
P.O. Box 51838  
Lafayette, Louisiana 75005

**SECRETARY**

Bruce E. Gaither  
12928 Granite NE  
Albuquerque, New Mexico 87112

**TREASURER**

Thomas B. Henderson  
1000 Texas Commerce Plaza  
Corpus Christi, Texas 78470

**PAST  
PRESIDENT**

Dr. James A. Hartman  
234 Loyola Bldg., Suite 924  
New Orleans, Louisiana 70112

**REPRES-  
ENTATIVES  
FROM  
MEMBER  
SOCIETIES**

Alabama Geological Society—Dorothy E. Raymond  
Austin Geological Society—L.E. Garner  
Baton Rouge Geological Society—Richard P. McCulloh  
Corpus Christi Geological Society—Thomas B. Henderson  
East Texas Geological Society—Russel W. Jackson  
Houston Geological Society—Dietmar Schumacher  
Lafayette Geological Society—Philip C. Judice  
Mississippi Geological Society—Stanley King  
New Orleans Geological Society—Carlo C. Christina  
Shreveport Geological Society—A. Michael Umphress  
South Texas Geological Society—Kenneth O. Seewald  
Southeastern Geological Society—Dr. Richard A. Davis, Jr.



**1988-1989  
EXECUTIVE COUNCIL  
GCS/SEPM**

**PRESIDENT**

Samuel P. Miano  
P.O. Box 457  
Garyville, LA 70051

**PRESIDENT  
ELECT**

Sheila C. Barnette  
Standard Oil Production Co.  
4401 Southwest Freeway  
Houston, TX 77074

**VICE  
PRESIDENT**

Charles C. Smith  
Geological Survey of Alabama  
P.O. Box 0  
Tuscaloosa, Alabama 45386

**SECRETARY**

Richard H. Fillon  
Texaco, U.S.A.  
P.O. Box 60252  
New Orleans, Louisiana 70161

**TREASURER**

Bethanne Breisacher  
Shell Offshore, Inc.  
P.O. Box 61933  
New Orleans, Louisiana 70161

**PAST  
PRESIDENT**

Arthur S. Waterman  
Paleo-Data Inc.  
6619 Fleur de Lis Dr.  
New Orleans, Louisiana 70124

# OFFICERS OF MEMBER SOCIETIES

## GCAGS and GCS/SEPM June 1989

### ALABAMA GEOLOGICAL SOCIETY, P.O. Box 6184, University, Alabama 35486

President	Dorothy E. Raymond
Vice President	Mark S. Drummond
Secretary	Janyth S. Tolson
Treasurer	Lawrence J. Rheams

### AUSTIN GEOLOGICAL SOCIETY, P.O. Box 1302, Austin, Texas 78767

President	L.E. Garner
President Elect	Jan Sloan
Vice President	Diana Slagle
Secretary	Steve Musick
Treasurer	R.P. Major

### BATON ROUGE GEOLOGICAL SOCIETY, INC., P.O. Box 19151, University Station, Baton Rouge, Louisiana 70893

President	Leonard H. Guilbeau
Vice President	Bobby L. Jones
Secretary	Bill Walter
Treasurer	Bradford C. Hanson

### CORPUS CHRISTI GEOLOGICAL SOCIETY, P.O. Box 1068, Corpus Christi, Texas 78403

President	Thomas B. Henderson, Jr.
President Elect	Patrick A. Nye
Secretary	Carroll A. Pyle
Treasurer	Hollis D. Marshall

### EAST TEXAS GEOLOGICAL SOCIETY, P.O. Box 216, Tyler, Texas 75710

President	Phillip W. Shoemaker
Vice President	C.F. "Casey" Clawson, II
Secretary-Treasurer	Charles Doubek

### HOUSTON GEOLOGICAL SOCIETY, 7171 Harwin, Suite 314, Houston, Texas 77036

President	Richard S. (Dick) Bishop
President Elect	Ronald W. Harlan
Vice President	Cyrus Strong
Secretary	Paul F. Hoffman
Treasurer	Larry D. Bartell

### LAFAYETTE GEOLOGICAL SOCIETY, P.O. Box 51896, Lafayette, Louisiana 70505

President	Gary Huffman
First Vice President	Mike Collins
Second Vice President	Carlton Cook
Secretary	Ellis Gilbeau
Treasurer	Tim Osbourne

### MISSISSIPPI GEOLOGICAL SOCIETY, P.O. Box 422, Jackson, Mississippi 39205

President	Stan Galicki
First Vice President	Jim Files
Second Vice President	Steve Champlin
Secretary	Todd Hines
Treasurer	Steve Ingram

### NEW ORLEANS GEOLOGICAL SOCIETY, P.O. Box 52172, New Orleans, Louisiana 70152

President	Carlo C. Christina
President Elect	Claude Baker
Vice President	John C. Langford
Secretary	Carol Gilchrist
Treasurer	Gary Knapp

### SHREVEPORT GEOLOGICAL SOCIETY, P.O. Box 750, Shreveport, Louisiana 71162

President	Michael Umphress
First Vice President	Grant Black
Second Vice President	Austin Sartin
Secretary	Gary Boland
Treasurer	Jenny Younker Hope

### SOUTH TEXAS GEOLOGICAL SOCIETY, D-100 Petroleum Center, San Antonio, Texas 78209

President	Wayne Jones
President Elect	Thomas E. Ewing
Vice President	Martha M. Guethle
Secretary	E. Gerald Rolf
Treasurer	Douglas A. Draves

### SOUTHEASTERN GEOLOGICAL SOCIETY, P.O. Box 1634, Tallahassee, Florida 32302

President	Frederick L. Pirkle
Vice President	Gary Morgan
Secretary	Donnie McLaugherty
Treasurer	Donna Burmeister

# STANDING COMMITTEES

GCAGS  
June, 1989

## A.A.P.G. Advisory

Robert W. Sabaté

## Awards and Nominations

Stewart Chuber, Chairman

James A. Hartman

Richard H. Sams

David E. Pope

E.G. (Jerry) Wermund

## Finance Gerald A. Cooley, Chairman

Robert J. Ardell

Matthew Daura

E. Stewart Hastings

Marvin L. Smith

## Financial Aid to Students

Richard W. Boebel, Chairman

Robert J. Ardell

Bob Whitney

## Historical

David E. Pope, Chairman

## Long-Range Planning

Edward E. Roy, Jr., Chairman

Gerald A. Cooley

James A. Hartman

David E. Pope

Richard H. Sams

William R. Payne (ex officio)

## Publications

Robert E. Boyer, Chairman

David B. Bieler

Edward C. Roy, Jr.

William C. Ward

E.G. (Jerry) Wermund

# PAST OFFICERS AND CONVENTION CHAIRMEN

## GCAGS

	HOST CITY	PRESIDENT	VICE-PRESIDENT	SECRETARY	TREASURER	CONVENTION CHAIRMAN
1951	New Orleans	L. Bowling	T. H. Philpott	J. S. Spencer	E. M. Baysinger	W. J. Nugent
1952	Corpus Christi	W. M. Chaddick, Jr.	W. A. Gorman	W. A. Peterson	T. D. Barber	
1953	Shreveport	R. T. Wade	D. D. Uterback	F. H. Webster	K. Carter	
1954	Houston	W. R. Canada	W. H. Knight	C. W. Holcomb	E. W. Kimball	R. D. Sprague
1955	Bloxi	A. E. Blanton	L. D. Traupe	R. A. Davis	C. C. Barber	G. J. Joyce
1956	San Antonio	R. L. Layden	M. W. Beckman	E. T. Musselman	A. F. Scott	T. H. Philpott
1957	New Orleans	H. N. Hickey	P. Montgomery	J. F. Moss	K. C. Anderson	R. C. Wilshusen
1958	Corpus Christi	E. A. Lohse	R. W. Grayson	W. W. Woolfolk	W. H. Wallace, Jr.	O. G. Bell
1959	Houston	G. C. Hardin, Jr.	L. Harvey	A. W. Wood	J. A. Wheeler	A. E. Blanton
1960	Bloxi	M. F. Kirby	D. N. Osburn	H. O. Woodbury	E. G. Jeffreys	L. L. Palmer
1961	San Antonio	D. Dassow	E. P. Roth	W. E. Bancroft	E. L. Ames	L. H. Meltzer
1962	New Orleans	T. H. Philpott	J. C. Byrd	R. W. Luker	K. Soule	H. J. Tyler
1963	Shreveport	J. C. Byrd	E. Knott	K. C. Harkins, Jr.	R. E. Rogers	B. F. Dryer
1964	Corpus Christi	K. Knott	R. E. Fairchild	W. A. Robbins, Jr.	D. A. Pedrotti	E. A. Lohse
1965	Houston	R. E. Fairchild	A. M. Borland	M. L. Frazier, Sr.	J. L. George, Jr.	R. R. Copeland
1966	Lafayette	A. M. Borland	J. H. Hensley	L. G. Hughes	J. S. Schoelen	M. O. Turner
1967	San Antonio	W. L. Stapp	M. D. Horton	J. W. Yon, Jr.	L. C. Bryant	L. E. Warren
1968	Jackson	M. D. Horton	R. O. Vernon	C. E. Brown	E. D. Minihan	H. S. Puri
1969	Miami	R. O. Vernon	H. J. Tyler	M. L. Dwight	C. W. Hendry, Jr.	J. O. Goffe
1970	Shreveport	H. J. Tyler	L. L. Meltzer	M. H. Oakes	B. C. Tucker	R. G. Williamson
1971	New Orleans	L. H. Meltzer	D. R. Boyd	M. E. Hole, Jr.	J. E. Gray	J. M. Sides
1972	Corpus Christi	D. R. Boyd	F. M. Schall, Jr.	T. J. Eby, Jr.	P. W. Cawthon, Jr.	C. E. Harrison
1973	Houston	F. M. Schall, Jr.	S. J. Lysinger	W. E. Taylor	J. L. Bellamy	F. W. Harrison, Jr.
1974	Lafayette	S. J. Lysinger	W. H. Moore	J. T. Palmer	H. L. Ladner	C. H. Williams, Jr.
1975	Jackson	W. H. Moore	C. L. Sartor	A. E. Bell	C. E. Brown	L. E. Jordan
1976	Shreveport	C. L. Sartor	R. E. Boyer	R. M. Swords	F. L. Osborne, Jr.	E. G. Wermund, Jr.
1977	Austin	R. E. Boyer	P. G. Gray	S. L. Perkins	C. J. Corona	J. Braunstein
1978	New Orleans	R. W. Stephens	E. C. Roy, Jr.	J. W. Shirley	L. C. Bryant	G. His
1979	San Antonio	E. C. Roy, Jr.	F. W. Harrison, Jr.	T. J. Wintermute	R. A. Anderson	M. A. Munchraith
1980	Lafayette	F. W. Harrison, Jr.	P. M. Strunk	C. G. Beckwith	W. R. Payne	Wilson Humphrey
1981	Corpus Christi	P. M. Strunk	J. J. Amoruso	S. A. Horton	C. A. Baird	J. O. Lewis
1982	Houston	J. J. Amoruso	J. P. Palmer	C. S. Cook	P. D. Cate	J. C. Marble
1983	Jackson	S. C. Childress	E. G. Wermund	R. Everett	E. W. Saye	J. M. Forgoison, Jr.
1984	Shreveport	J. T. Palmer	D. E. Pope	B. D. David	D. C. Ratchiff	L. E. Garner
1985	Austin	E. G. Wermund	R. H. Sams	M. T. Tobin	F. E. Lindfors-Kearns	H. L. Roland
1986	Baton Rouge	D. E. Pope	J. A. Hartman	R. W. Sabaté	T. Cooper	D. F. Tobin
1987	San Antonio	R. H. Sams	W. R. Payne	B. E. Gaither	J. E. Bailey	C. C. Baker
1988	New Orleans	J. A. Hartman	P. R. Gray		T. B. Henderson	G. M. Heinzelmann
1989	Corpus Christi	W. R. Payne				

# PAST OFFICERS

## GCS/SEPM

	PRESIDENT	VICE-PRESIDENT	SECRETARY	TREASURER
1953-1954	Stuart A. Levinson	Grover E. Murray	William H. Akers	Frank V. Stevensen
1954-1955	Charles W. Stuckey, Jr.	E. H. Rainwater	William H. Akers	Fred L. Smith, Jr.
1955-1956	E. H. Rainwater	Frank S. Westmoreland	Hugh A. Bernard	Eleanor T. Caldwell
1956-1957	Lloyd M. Pyeatt	J. O. Colle	H. Dillingham, Jr.	Eleanor T. Caldwell
1957-1958	J. O. Colle	Fred L. Smith, Jr.	Harold V. Andersen	William G. Parker
1958-1959	Marcus A. Hanna	Claude M. Quigley	Fred E. Smith	Bernard L. Hill, Jr.
1959-1960	David E. Pope	A. D. Ellis, Jr.	Gordon C. Munsey	H. A. Chun
1960-1961	Claude M. Quigley	Harold V. Andersen	E. Ann Butler	Edward Marks
1961-1962	Harold V. Andersen	Theodore D. Cook	Benjamin J. Petrusek	Albert D. Warren
1962-1963	Albert D. Warren	Ernest H. Horton	Blair S. Parrott	Henry H. Phillips
1963-1964	Lyman D. Toulmin	E. Ann Butler	Charles C. Albers	John E. Kilgore
1964-1965	Howard L. Tipsword	Benjamin J. Petrusek	D. Jeter Smith	Emmett R. Adams
1965-1966	John B. Dunlap, Jr.	John J. W. Rogers	M. Ray Bane	Charles B. Morris
1966-1967	Hubert C. Skinner	Richard P. Zingula	Gene Ross Kellough	Gene B. Martin
1967-1968	Benjamin J. Petrusek	Dan McGregor	Garrett Briggs	Herbert A. Elliott, Jr.
1968-1969	William A. Atlee	Edgar B. O'Quinn	James W. Fowler	William E. Steinkraus
1969-1970	Fred L. Smith, Jr.	Kenneth L. Loep	Robert K. Sylvester	C. Wylie Poag, Jr.
1970-1971	Jules Braunstein	Douglas E. Jones	Walter H. Trenchard	Robert N. Davids
1971-1972	William W. Hay	William E. Steinkraus	Karl J. Koenig	Gerald R. Stude
1972-1973	C. Wylie Poag, Jr.	Emmett R. Adams	Gerald R. Stude	Joan B. Strough
1973-1974	Edward B. Picou, Jr.	Walter H. Trenchard	Lawrence C. Menconi	J. Loyd Tuttle, Jr.
1974-1975	Emmett R. Adams	Clifton A. Couture	Herbert A. Elliott, Jr.	Doris M. Curtis
1975-1976	James L. Lamb	Lawrence C. Menconi	William S. Grubb	John L. Carney
1976-1977	Clifton A. Couture	Eleanor T. Caldwell	Sherwood W. Wise, Jr.	Joseph E. Boudreaux
1977-1978	Gerald R. Strude	William P.S. Ventress	Gary R. Roberson	George C. Esker, III
1978-1979	Willard P. Leutze	Bob F. Perkins	Walter P. Kessinger	Kenneth A. Hodgkinson
1979-1980	Gene B. Martin	John L. Carney	Mary Ann Rafle	Arthur S. Waterman
1980-1981	Bob F. Perkins	Don G. Bebout	Sheila C. Barnette	Ted Karmen
1981-1982	William P.S. Ventress	Kenneth A. Hodgkinson	Brian J. O'Neill	Kurt Geitzenauer
1982-1983	John L. Carney	Ernest A. Mancini	Susan J. Conger Morris	Kevin C. Kilmartin
1983-1984	Don G. Bebout	Michael J. Nault	Susan J. Conger Morris	Nelson B. Yoder
1984-1985	Ernest A. Mancini	J. M. Crosbie	John G. McPherson	John B. Anderson
1985-1986	Susan J. Conger Morris	Arthur S. Waterman	John G. McPherson	Richard E. Constans
1986-1987	Charles L. McNulty	Denise M. Butler	Kurt R. Geitzenauer	Sylvester Q. Breard, Jr.
1987-1988	Arthur S. Waterman	Brian J. O'Neill	Ramil C. Wright	Charles G. Rosato
1988-1989	Samuel P. Miano	Charles C. Smith	Richard H. Fillon	Bethanne Breisauger

# BYLAWS

## GCAGS

### PART A: ORGANIZATION

#### ARTICLE I—NAME

This is a non-profit organization and shall be known as the "Gulf Coast Association of Geological Societies, Inc.". It is hereinafter referred to as "This Association."

#### ARTICLE II—OBJECT

The object of This Association is to provide for discussion and publication of papers on subjects and problems coming within the scope of the Geological profession and with particular emphasis on Gulf Coast geology.

#### ARTICLE III—ORGANIZATION

This Association is an organization of AAPG-affiliated Geological Societies in the Gulf Coast area.

##### SECTION 1.

The business of This Association shall be transacted by a Board of Directors composed of one representative from each member society and the President, Vice President, Secretary, Treasurer and Past President. The Vice President, Secretary, and Treasurer shall be elected by the Board of Directors at the annual meeting. At the request of the Vice President's society, however, the Secretary and Treasurer may be elected at a prior Board meeting but they will not take office until after the annual meeting. The Secretary and Treasurer shall be non voting members of the Board of Directors. The Secretary and Treasurer shall be nominated by the Executive Committee of the local Geological Society next in line to host the annual meeting. The Vice President shall be nominated by the Executive Committee of the host society for the annual meeting two years hence and shall accede to the Presidency. Thus each year the President, Secretary, and Treasurer will be from the host society with the Vice President providing continuity with the Board of Directors as he assumes the Presidency in the ensuing year. The duties of these officers shall be those customary to their respective offices.

The GCAGS representative to the Advisory Council of American Association of Petroleum Geologists shall be selected by the Board of Directors of GCAGS and shall be an ex officio, non-voting member of the GCAGS Board of Directors.

Each member society shall designate a representative to the Board of Directors and in the event the chosen representative cannot attend any given Board of Directors meeting, an alternate representative shall be appointed by the member society to attend and vote in the absence of the representative. The representative, when practicable, shall be an officer or past officer of the society he represents.

Each society shall have one vote on actions taken by the Board of Directors with the exception that the host society, the next annual host society and the immediate past host

society will be entitled to two votes by virtue of their members holding the offices of President, Vice President, and Past President.

The officers of the Board of Directors shall be elected for a term of one year. They shall be elected and assume their duties as soon after the annual meeting of This Association as is practicable, except as noted in Paragraph 1 with regard to the Secretary and Treasurer. Any vacancies shall be filled by the Board of Directors as provided above in Paragraph 1.

##### SECTION 2.

The business of This Association shall be conducted by the Board of Directors. A simple majority vote of the members present at meetings is required to effect decisions, except in those matters which require a greater majority, as set forth in these Bylaws.

A quorum shall consist of more than one half of the voting members of the Board of Directors.

The Executive Committee composed of the President, Vice President, Secretary, Treasurer, Past President, and Finance Committee Chairman shall have the authority to transact business of an emergency nature between meetings. Any business so transacted shall be subject to ratification by the Board of Directors at its next regularly scheduled meeting. A quorum of the Executive Committee shall be three members.

#### ARTICLE IV—MEETINGS

There shall be an annual meeting of This Association, the time and place of which shall be determined by the Board of Directors. Additional meetings may be called at the discretion of the Board of Directors.

#### ARTICLE V—PUBLICATIONS

There shall be an annual Transactions published by This Association, which shall contain papers presented at the annual meeting, and such other material as selected by the Board of Directors. The Board of Directors is authorized to have published additional bulletins, and other material which they feel will further the object of This Association.

#### ARTICLE VI—FUNDS

The funds of This Association shall be deposited in any national bank or Federally insured Savings and Loan Association selected by the Finance Committee, to the credit of This Association, or invested in U.S. Government Bonds at the discretion of the Finance Committee.

#### ARTICLE VII—AMENDMENTS

Amendments to this PART A and to the Articles of Incorporation may be proposed by the Board of Directors, or by any two member societies. Proposed amendments shall be submitted to

each of the member societies in writing. It shall require an affirmative vote of three fourths of the member societies to ratify such an amendment.

#### ARTICLE VIII—LATER AFFILIATION

Non-member Geological Societies in the Gulf Coast Area which are affiliated with AAPG may petition the Board of Directors for membership and shall be accepted by an affirmative vote of three fourths of the Board of Directors.

#### ARTICLE IX—RESIGNATION

Any member society may resign from This Association at any time by written notice to the Board of Directors. There shall be no obligation to transfer to such resigning society any portion of This Association's funds.

#### ARTICLE X—DISSOLUTION

This Association shall terminate at such time as a majority of the member societies shall so vote. Upon dissolution all funds and other property shall be divided as mandated by the Articles of Incorporation.

## PART B: COMMITTEES, FINANCES

### ARTICLE I—COMMITTEES

The President, with the approval of the Board of Directors, shall appoint the Annual Meeting Chairman and the Publications Committee Chairman, appointments being for one year.

#### SECTION 1: ANNUAL MEETING CHAIRMAN

The Annual Meeting Chairman shall direct the staging of the annual meeting, and shall have the authority to appoint such additional committees as he deems necessary.

#### SECTION 2: PUBLICATIONS

This committee shall be responsible for publishing all publications of This Association except the Transactions which falls under the purview of the Annual Meeting Chairman. Sales and storage of all GCAGS publications, including the Transactions, are the responsibility of this committee. The chairman shall provide annually to the Finance Committee an inventory of the GCAGS publications.

#### SECTION 3:

The President, with the approval of the Board of Directors, may appoint such additional committees as are necessary to conduct the business of This Association.

### ARTICLE II—TREASURER

The Treasurer shall have the authority to issue checks against the Annual Meeting bank account of This Association on his sole signature, but in the event of his absence or incapacity to act, withdrawals or payments by check may be made on the signature of the President during continuance of the absence, or incapacity, of the Treasurer. In this event, the identity and authority of the President, and the circumstances relating to the absence or incapacity of the Treasurer shall be certified by the Board of Directors, if so required by the depository. The Treasurer shall submit a financial report on the Annual Meeting at each meeting of the Board of Directors and shall keep a set of books in accordance with good accounting practices. He shall submit the books of the Annual Meeting to the Finance Committee by March 1st

following the Annual Meeting. The office of Treasurer shall be bonded as directed by the Board of Directors.

### ARTICLE III—FINANCE COMMITTEE

The Finance Committee shall be responsible for investing and managing the funds of the Association. They shall be responsible for advancing to the Treasurer the necessary funds for operating the Annual Meeting and shall disburse funds for expenses and projects not related to the Annual Meeting as directed by the President upon approval by the Board of Directors. The Committee shall have authority to invest the funds as outlined in Article VI of PART A hereof. They shall prepare a financial report on the Association's funds and submit it at each meeting of the Board of Directors. They shall also keep an inventory of publications and equipment owned by the Association. They will keep a set of books in accordance with good accounting practices and will submit the books for auditing as requested by the Board of Directors. The Committee will oversee the preparation and submittal of the Association's Annual Income Tax Return. The Committee will also keep a file of these financial reports, as well as the report of the Treasurer for each Annual Meeting, for access by Officers and representatives of the annual meeting for future years. The Committee shall consist of five members serving staggered three year terms, such that each year one to three members will complete their terms and one to three new members will be appointed. The President of the Association, with the approval of the Board of Directors, shall appoint the members of the Finance Committee and select its chairman. Members of the Finance Committee shall be bonded as directed by the Board of Directors. All checks of greater than \$1,000 shall be signed by two of the Finance Committee members.

### ARTICLE IV—AMENDMENTS

This PART B may be amended by an affirmative vote of three fourths of the Board of Directors.

### ARTICLE V—DUES

There shall be no dues.

# BYLAWS

## GCS/SEPM

### ARTICLE 1.—OBJECT

**1.01**—The object of the Gulf Coast Section of the Society of Economic Paleontologists and Mineralogists is to promote the science of stratigraphy in the Gulf Coast states through research in paleontology and sedimentary petrology, especially as it relates to petroleum geology. The Corporation, herein referred to as the "Section," will be closely associated with the Gulf Coast Association of Geological Societies and will cooperate with it and with the local geological societies of which it is composed for the furtherance of mutual objectives.

### ARTICLE 2.—MEMBERS

**2.01**—The Section shall have members, associate members, charter members, and honorary members.

**2.02**—Members shall be persons engaged in paleontologic, petrographic or stratigraphic studies that have application to the geology of petroleum, who are members or associate members of the Society of Economic Paleontologists and Mineralogists and who work or reside in the Gulf Coast province of the states of Texas, Louisiana, Mississippi, Alabama, Georgia or Florida, or whose interest or work is principally within these states. Membership, once obtained, shall not be dependent upon continued residence in the aforementioned states.

**2.03**—Associate members shall be persons engaged in paleontologic, petrographic or stratigraphic studies that have application to the geology of petroleum, who work or reside in the Gulf Coast province of the above mentioned states, and who are not members or associate members of the Society of Economic Paleontologists and Mineralogists. Associates shall enjoy all the privileges of membership, save that they shall not hold office. Election to membership in the Society of Economic Paleontologists and Mineralogists will automatically advance associates to members.

**2.04**—Charter members are those whose application for membership were received before the first nomination of officers. They shall enjoy all the privileges of members and, hereinafter, are included in all references to "members."

**2.05**—The Council may elect as honorary members persons who have contributed distinguished service to the science of stratigraphy, paleontology or sedimentary petrology, especially as they relate to petroleum geology in the Gulf Coast. Honorary members shall not be required to pay dues.

**2.06**—Each candidate for membership shall submit to the Secretary an application on a form authorized by the Council for this purpose.

**2.07**—New members and associates enrolled after September 15 shall be considered as having paid their dues for the next calendar year.

### ARTICLE 3.—COUNCIL AND OFFICERS

**3.01**—Executive authority of the Section is vested in a board of directors known as the "Council" consisting of six members who

are duly elected by the members, as follows: President, President-Elect, Vice President, Secretary, Treasurer, and the most recently retired Past President.

**3.02**—The President shall discharge the usual duties of a president, as well as act as presiding officer at all meetings of the Section and Council. He shall appoint an Editor, Program Chairman, Committee Chairmen and Business Representatives.

**3.03**—The Vice President shall assume the duties of the President in the case of the absence or disability of the latter. He shall also be Chairman of the Membership Committee and Chairman of the Employment Counseling Committee.

**3.04**—The Secretary shall keep records of the proceedings of the Section and a complete list of the membership. He shall attend to the preparation and mailing of notices, membership application blanks and other materials necessary to the business of the Section.

**3.05**—The Treasurer shall have custody of all funds of the Section. He shall keep account of the receipts and disbursements, and submit his account to the membership at the end of each year.

**3.06**—The Council shall consider all candidates for membership and pass on the qualifications of the applicants; shall have control and management of the affairs and funds of the Section; shall designate the time and place of the Annual Meeting.

**3.07**—The President and Vice President shall not serve for more than one (1) year, except that if the Vice President succeeds to the position of Acting President, he may be elected to a full term as President.

**3.08**—In the event that neither the President nor Vice President is available to serve as presiding officer of the Section, the immediate Past President shall assume the President's duties.

**3.09**—The President-Elect shall serve for one (1) year as such, and in the following year he shall assume the office of President. He shall have no administrative authority except as a member of the Council. He shall acquaint himself with all the details of the office of President and generally prepare himself to serve as President. He shall be responsible for the preparation of the annual meeting for the ensuing year.

**3.10**—A vacancy occurring in the offices of Vice President, Secretary or Treasurer shall be filled by Council appointment.

**3.11**—A vacancy occurring in the office of President-Elect shall be filled by mail ballot by the membership through a special election called by the Council.

### ARTICLE 4.—MEETINGS OF MEMBERS

**4.01**—The Section shall hold at least one stated meeting each year, which shall be known as the Annual Meeting. This meeting will usually be held in conjunction with the Annual Meeting of the Gulf Coast Association of Geological Societies.



4.02—The program for the Annual Meeting shall be arranged by the Program Chairman in conjunction with the Chairman designated by the Gulf Coast Association of Geological Societies to arrange for its own program. In general, it will be desirable that the contributions from members of the Section be included in the main program rather than being allotted to a separate session.

4.03—At the time of the Annual Meeting, a Business Meeting shall be held for the transaction of Section business.

ARTICLE 5.—AMENDMENT OF BYLAWS

5.01—These Bylaws may be amended by a two-thirds vote of returned mail ballots received by the Secretary sixty (60) days after proposal of amendments with provision for vote is mailed to the members. Any proposed amendments must have the approval of a majority of the Council before being submitted to the members.

5.02—A petition containing the signatures of twenty (20) active members is considered sufficient to bring before the Council a proposed change in the Bylaws. A majority vote of the Council is also considered sufficient to initiate a proposed change.

ARTICLE 6.—DUES

6.01—The fiscal year of the Section shall commence on October 1 and expire on September 30 of the following year.

6.02—The annual dues of the members and associates of the Section shall be eight dollars (\$8.00). Penalty of fifty cents (.50) shall be assessed for late payments. The fifty cents (.50) late penalty shall be waived upon payment of dues for two more years.

6.03—A bill for dues shall be mailed to each member and associate before January 1 of each year. Members and Associates who have not paid their annual dues by April 1 shall be dropped from the membership roles.

6.04—Members and Associates dropped for non-payment of dues may apply to the Council for reinstatement and be reinstated by majority vote of the Council.

6.05—Members or Associates may, at their discretion, pay their annual dues in advance for periods of up to five (5) years.

ARTICLE 7.—FINANCIAL PROCEDURE

7.01—No officer or member shall enter into contract or disburse any of the Section's funds, without the co-signature of a member of the Council. Disbursal of a sum in excess of Five Hundred Dollars (\$500.00) must be approved by a majority of the Council.

ARTICLE 8.—ELECTIONS

8.01—The President shall appoint two (2) nominating committees, instructing each committee to submit nominations for President-Elect, Vice President, Secretary, and Treasurer. These nominations shall be in the Secretary's hands before July 15. If desired, the same person may be nominated by the two committees for the offices of Secretary and Treasurer, but the nominations for President-Elect and Vice President shall not include the names of the same person on the two slates. The nominations of the first committee to file its report will have precedence in case of overlapping nominations, and the other committee shall then

be requested to change its nomination. A candidate for office must be an active member and reside in the Gulf Coast at the time of his nomination.

8.02—Ballots containing the nominations for officers, arranged alphabetically under each office, shall be prepared by the Secretary and mailed to each member of the Section on or before July 15. The ballots received by the Secretary before September 15 shall be counted by him. Receipt of a plurality of the votes cast for any office shall constitute election. In case of a tie vote, members of the Council shall cast one additional deciding vote.

8.03—Results of balloting shall be announced at the Annual Meeting, and the new officers shall enter upon duty at the adjournment of the Meeting.

ARTICLE 9.—PUBLICATIONS

9.01—The Section Editor, appointed by the President, shall actively solicit papers from the Section membership for presentation at the Annual Meeting. He shall cooperate with the editor of the Gulf Coast Association of Geological Societies' Transactions volume in preparing papers delivered at the meeting for publication in this volume. He shall cooperate with the editors of the Society of Paleontologists and Mineralogists' journals by helping to arrange for publication in these periodicals of suitable papers which come to his attention.

9.02—Members of the Section may purchase one copy of each Section publication at a discount rate of 20 percent off the advertised price.

ARTICLE 10.—BUSINESS REPRESENTATIVES

10.01—The President shall appoint one representative from each group of members in each local geological society affiliated with the Gulf Coast Association of Geological Societies and in other localities as needed. Each representative shall have an up-to-date list of the members residing in his vicinity. He will notify these members concerning any matter of Section policy which may be relayed to him by the President and shall have the authority to convene a meeting of those members to determine their views concerning Section affairs. He will report the results of such meetings to the President of the Section. He will cooperate with the Section Editor in the soliciting of papers to be presented at the Annual Meeting and with the Chairman of the Membership Committee in recruiting new members for the Section.

ARTICLE 11.—AUDIT

11.01—The President shall appoint an Auditing Committee which shall review the accounts presented by the Treasurer. The approval of the Treasurer's books by the committee shall be required before his final report will be accepted. The Treasurer shall submit a provisional report at the Annual Meeting, and his final audit shall be accomplished not later than 30 days thereafter.

The Constitution of the GCS/SEPM was originally adopted in 1954 and was amended in 1960, 1962, 1966, 1969, 1971, 1972, 1974, and 1981. The Section was incorporated under the laws of the State of Texas in 1981, and these Bylaws were adopted at that time in place of the original Constitution and its amendments. They were amended in 1984. These Bylaws embody all of the provisions of the original Constitution and its amendments.